

Then and Now Sudbury 50s to 80s Education Pack Part Three

Image Bank



Norma, born 1939



Cecilyn, born 1933



M



Patricia, born 1949





Shirley, born 1934



Kathleen, born 1943





Viv, born 1943

Barbara, born 1943



Barbara in the 1950s



Francis, born 1955





**Left to right: Farthing (1/4 penny), Halfpenny, 1 penny, threepence, sixpence, shilling
Commonly used coins in UK before 1971**



Numeric decimal Gibson A14 ticket machine, serial No. 28096, with case, 1971 - c1980. Gibson type A14 ticket machine as used on bus transport, with original case and two unused ticket rolls. ©London Transport Museum



1960s Bus Tickets Tickets were used as a receipt for the journey and stated the tickets unique serial number; the stage boarded number was printed under Ord. (adult) or Child and the price paid for the journey.



Man in pinstripe suit and bowler hat, 1950s
©International Wool Secretariat.



<https://www.pinterest.co.uk/pin/499336677425674659/>





Quex Road Pioneers outing – 1961. A group of Pioneers dance by the roadside on their return from an outing to Clacton-on-Sea. The trip was organised by the Church of the Sacred Heart in Quex Road, Kilburn. ©Paddy Fahey.



Home Life





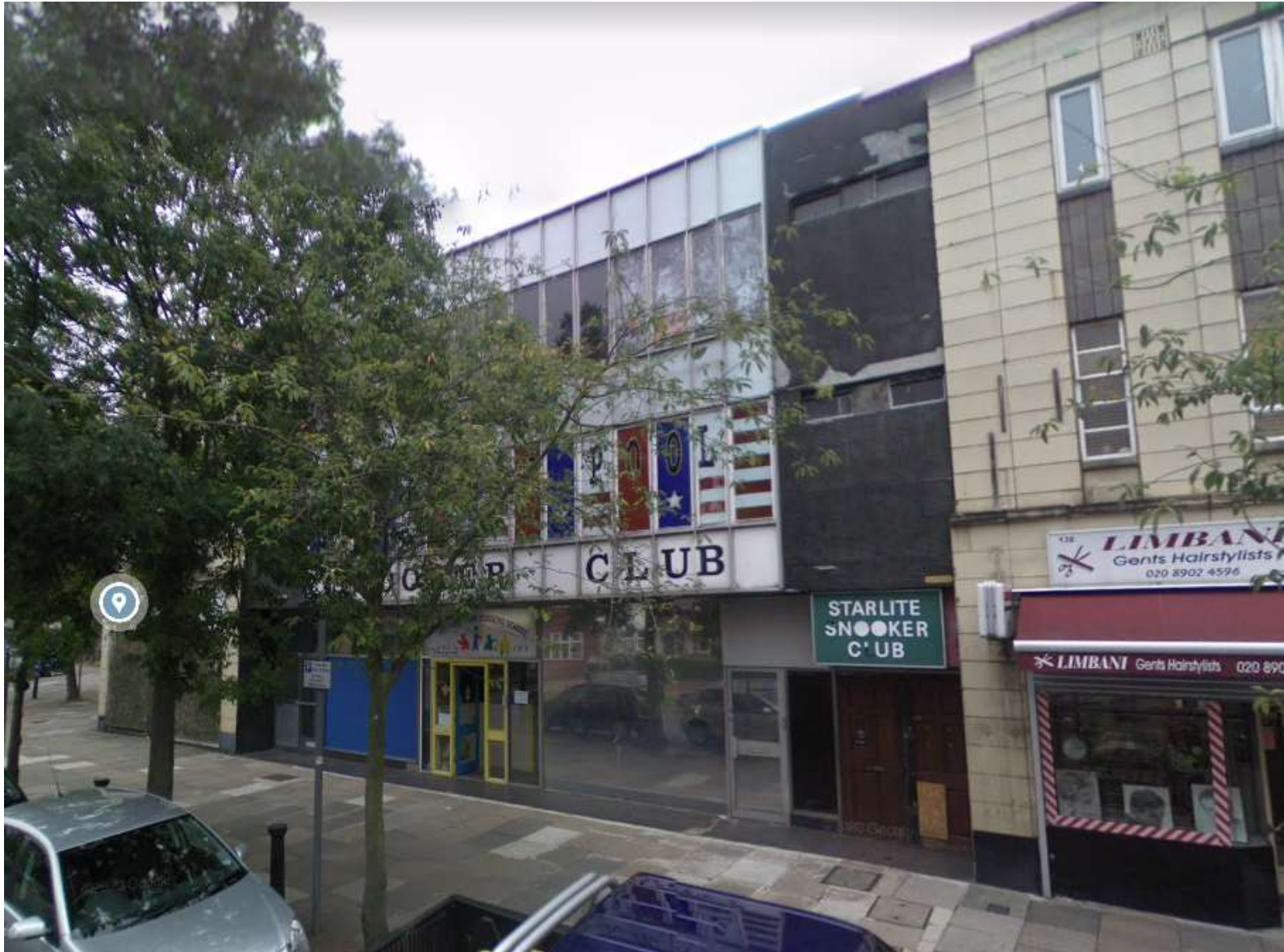
Eton Avenue, Sudbury 2019





Eton Avenue, Sudbury





15 Allendale Road, site of the Odeon cinema and Starlite Ballroom, 2015.





Sudbury Town, Odeon Cinema, 1935.
Photograph taken by Ken Roe.



Starlite Ballroom, Sudbury 1964





Wembley Stadium 2019

<https://media.londonandpartners.com/news/2019-us-sport-takeover-in-london>





Wembley Stadium, C.1960s





662 Trolleybus at Sudbury Terminus (Perkin's Green) c. 1958-1963

