



FEEDBACK SUMMARY EXHIBITION 02 EMERGING DESIGNS

ST RAPHAEL'S ESTATE
Phase 1

December 2021 - February 2022

INTRODUCTION

In December 2021, Brent Council, Karakusevic Carson Architects and Periscope Landscape Architects, held the second public exhibition at St Raphael's Estate. The aim of the event was to discuss emerging designs for Phase 1 and Infill+ community spaces, and gather feedback from residents. The in-person exhibition took place as part of the St Raph's Winter Fair, which featured activities such as wreath-making, Santa's Grotto and a Quiz Walk to attract as many visitors as possible.

This document gives a summary of the event and the feedback received.

All residents received an invitation to the public exhibition by post. The event was also advertised through a newsletter, email and an update on the project website.

The in-person exhibition was held at Sufra NW London Food Bank & Kitchen during the St Raph's Winter Fair on **Saturday 11th December, 12 - 4pm.**

Masks and social distancing were enforced at the event to prevent the spread of COVID-19. Residents were asked not to attend if they were feeling unwell or were showing symptoms.

Residents could also access an online version of the exhibition at www.futurestraphs.com.

After the exhibition a booklet and questionnaire were delivered to households. We understand that there was an issue with delivery and only half of households received the information. Unfortunately, it was discovered after the closing period.

Targeted engagement with the Community Design Group, an estate youth group and especially affected residents is currently being undertaken to minimise the impact of a poor response rate.

Attendees
~25



Exhibition at the Winter Fair

DESIGN FEEDBACK

Feedback and equality monitoring forms were distributed at the exhibition to collect comments and design ideas.

We received feedback about landscape proposals. Residents gave suggestions for future uses of the green space, including exercise infrastructure and food growing. A few residents expressing concern about the reduction in green space.

Comments about the design of new buildings were broadly positive, however we didn't receive very many responses on this topic. One comment suggests that residents are still undecided and need more detailed design proposals to give informed responses.

Space caters for all. Love the gated area behind Tillett Close

Would prefer to have open green space, we have enough kids parks

I like the buildings that will be built in parallel to North circular road. But don't agree with more buildings in the park area as it reduces the amount of fields which can be used by new and old residents.

Sensitive design

I'm undecided at the moment

Green space will be reduced and there will be issues for parking

I like the intention to make the green space more attractive to local residents. It seems currently under utilised

Nice focus on nature

Food growing please!

Outdoor gym

The more open spaces available the better

Everything looks good

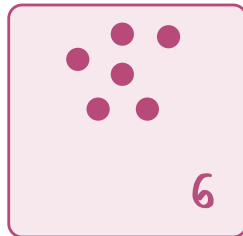
Space to work, community kitchen

COMMUNITY USE FEEDBACK

Residents shared their preferences for the uses for the commercial/community spaces that could be delivered as part of Infill Plus, with fairly even interest in the suggested proposals.

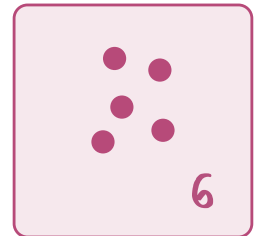
COMMUNITY CAFE

Where local residents can meet and enjoy food together



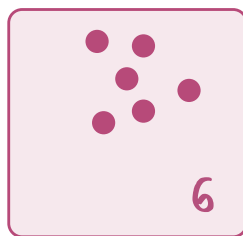
WORK - RENT A DESK SPACE

Shared space for collaboration and work



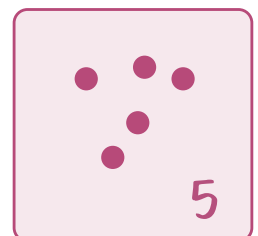
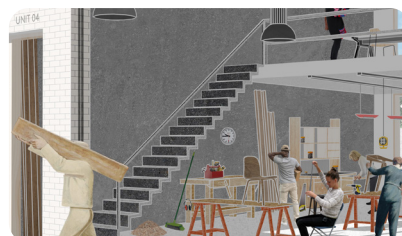
PLACE FOR GATHERING

Place to gather and celebrate with friends and family



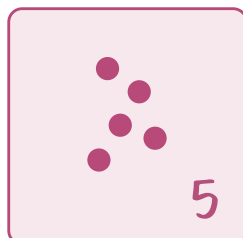
WORK - WORKSHOP SPACE

Space where you can share and learn new skills



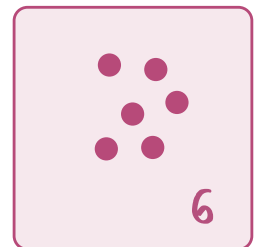
COMMUNITY KITCHEN

Place where people can meet, cook and share healthy, affordable meals



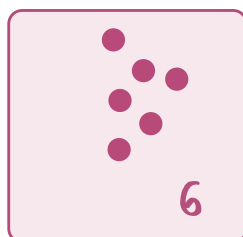
SPACE FOR PLAY

Inviting place for young people to meet and play



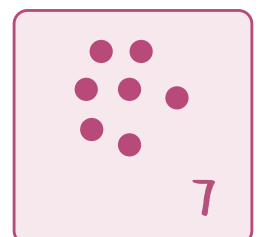
LEARNING AND QUIET TIME

Calm, creative space with a welcoming learning environment and place to rest



SPACE FOR LEISURE AND SPORT

Dedicated space for sporting facilities



OTHER SUGGESTIONS

Additional suggestions included:

Gym, co-working
space, coffee shop

Space to work,
community kitchen

Something for
the youth group

Homework group

Access for
elderly people

Community led projects

DOOR-KNOCKING

On Friday 11 February 2022, Karakusevic Carson Architects door-knocked 11-22 Tillett Close to speak to residents about the new houses and communal garden proposed opposite of their backgardens.

4 homes - no answer

2 homes - have already spoken to team at exhibition, no further questions

1 home - asked to contact us via email or phone

Questions and comments from the other homes:

- Two questions about timescales and start date
- One question if the lighting on existing homes could be updated too
- Positive towards the new development and said it would improve the general area. Particularly happy with the new communal garden, where the children can play safely while the parents watch
- Concern about the safety of the communal garden and stressed it would need to be secured so only the residents sharing the garden can access it.

- If there is provision for food growing this should be provided in raised planters as the land is contaminated
- Concerned about distance between homes
- Will block light, not necessarily an issue as typically very bright and need to close curtains during the day
- Noise from park an issue
- Concerned about new neighbours, good sense of community at the moment
- Positive about the communal garden and what it can offer



Staff putting up sketch view signs to show what the new view from that location could look like



Staff door-knocking Tillett Close residents to talk about the proposed communal garden

SPACE FOR GIRLS WORKSHOP SERIES

In the masterplanning phase we learned from a few young women on the estate that after the age of about 10-11, a lot of girls stop using the public spaces on the estate. Partly because it doesn't feel safe and partly because there aren't any spaces they want to use.

In response to this, the design team has worked with a group of girls on the estate to explore how we can create safer outdoor spaces that teenage girls would want to use and would feel safe to use. We held an estate walkaround and discussion with the group in January to find out what the girls do in their spare time and if/how they use the current park and open spaces on the estate.

In February we invited the group to Periscope, the landscape architects', offices. During this session, we created mood boards of the types of green spaces they thought would work well at St. Raph's, had a nice lunch and got our hands dirty modelling with clay.

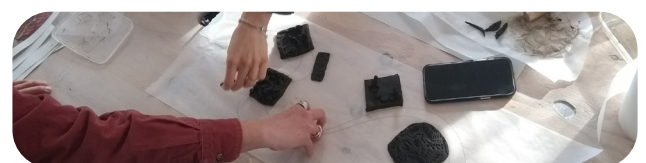
The designers are now busy incorporating the feedback and ideas from the girls into the landscape designs. We will present these at the final exhibition.

Key takeaways:

- No 'free' nice indoor places to spend time ("sit and chill") with friends in - needed in winter time particularly
- Nice to have a space to study that isn't as quiet as a library
- Not enough benches
- No covered spaces
- People don't use the park and public spaces as much as one girls remembers from her childhood - maybe because it feels less safe on the estate now
- Lighting is an issue
- Spaces should be well-designed and look modern with a mix of seating areas depending on activity and if you're there with friends
- Gym would be nice but not a "crappy gym"



Estate walkaround



Collaging and clay modelling at Periscope's offices

LIGHTING WORKSHOP

On 29 January 2022, Light Follows Behaviour supported by Karakusevic Carson Architects held a workshop on 'lighting' outside Henderson House on the estate.

Light Follows Behaviour are lighting specialists who work regularly with local authorities and residents to improve approaches to lighting on estates and other public spaces through often innovative and small-scale interventions with large impacts.

Key takeaways from the workshop:

- Warm lighting creates a more inviting atmosphere than cold light
- Better colour and quality of light to perceive details better
- Less contrast and more uniformity to create more legible space and avoid 'pools of darkness' which often makes spaces feel less safe
- Hierarchy of paths to create safer routes within the estate - eg. light routes close to homes during evening and night time to encourage people to take paths with better natural overlooking
- Human scale lighting vs street lighting column - this minimises 'light pollution' which can disturb both fauna and people
- Highlight main features such as playground, greenery, trees and MUGA, so these can be safely used in winter afternoon and evenings too



Elettra from Light Follows Behaviour explains the difference between warm and cold light



Light Follows Behaviour shows the group different approaches to lighting up public spaces and paths



periscope

Karakusevic Carson Architects