



**SCHEDULE OF MODIFICATIONS TO THE POLICIES MAP OF DRAFT BRENT LOCAL PLAN SUBMITTED FOR EXAMINATION IN MARCH  
2020  
LONDON BOROUGH OF BRENT**

All proposed modifications and their reference numbers supersede all previous versions proposed by the Council during the examination process.

<b>Policy Map Change</b>	<b>Chapter</b>	<b>Policy</b>	<b>Modification Proposed</b>	<b>Reason for Modification</b>
Map Mod 1	None	West London Waste Plan (WLWP) 3 Location of Waste Development – existing waste management sites.	Identify safeguarded waste sites as set out in the West London Waste Plan - Alperton	To provide clarity on sites that have associated policies in the West London Waste Plan
Map Mod 2	None	West London Waste Plan (WLWP) 3 Location of Waste Development – existing waste management sites.	Identify safeguarded waste sites as set out in the West London Waste Plan – Mount Pleasant	To provide clarity on sites that have associated policies in the West London Waste Plan
Map Mod 3	None	West London Waste Plan (WLWP) 3 Location of Waste Development –	Identify safeguarded waste sites as set out in the West London Waste Plan – Neasden	To provide clarity on sites that have associated policies in the West London Waste Plan

Policy Map Change	Chapter	Policy	Modification Proposed	Reason for Modification
		existing waste management sites.		
Map Mod 4	None	West London Waste Plan (WLWP) 3 Location of Waste Development – existing waste management sites.	Identify safeguarded waste sites as set out in the West London Waste Plan – Wembley Hannah Close	To provide clarity on sites that have associated policies in the West London Waste Plan
Map Mod 5	None	West London Waste Plan (WLWP) 3 Location of Waste Development – existing waste management sites.	Identify safeguarded waste sites as set out in the West London Waste Plan – Wembley Fourth and Fifth Way	To provide clarity on sites that have associated policies in the West London Waste Plan
Map Mod 6	5.1 Central	BCGA1	Identify Wembley Opportunity Area with a boundary consistent with the Wembley Growth Area.	Provide clarity on Wembley Opportunity Area for associated London Plan policies.
Map Mod 7	5.1 Central	BCSA4	Edit site allocation boundary	Remove waste site from site boundary to add to BCSA9
Map Mod 8	5.1 Central	BCSA6	Edit site allocation boundary	Site boundary changed to remove completed development site.
Map Mod 9	5.1 Central	BCSA7	Edit site allocation boundary	Boundary changed to divide into 2 separate site allocations, creating a new allocations BCSA20
Map Mod 10	5.1 Central	BCSA9	Edit site allocation boundary	Site boundary changed to add the waste site from BCSA4
Map Mod 11	5.1 Central	BCSA17	Remove site allocation boundary	Site is within SIL so to be consistent with BE2 is not suitable for mixed use development allocation.

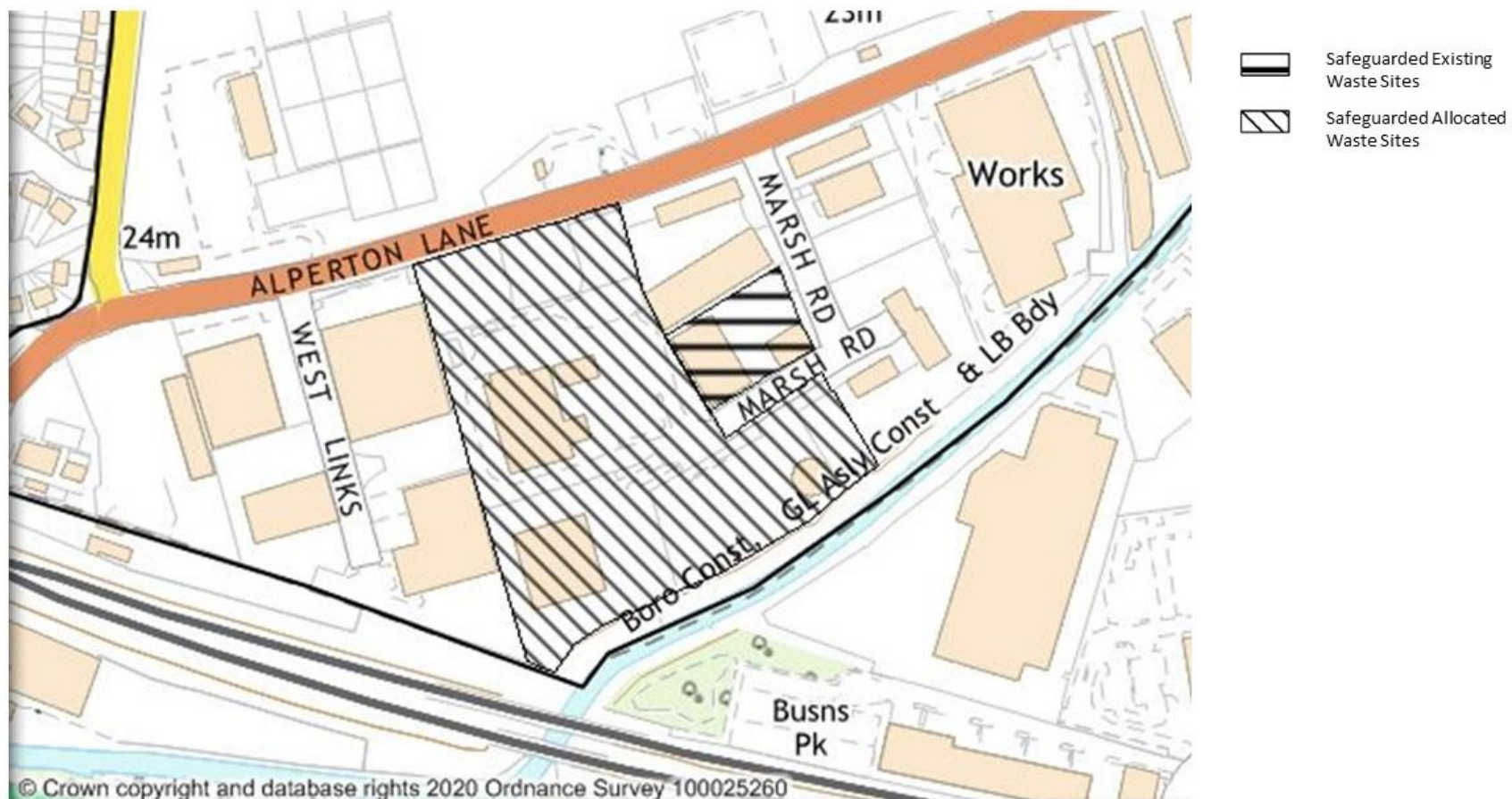
Policy Map Change	Chapter	Policy	Modification Proposed	Reason for Modification
Map Mod 12	5.1 Central	BCSA20	Add site allocation boundary	A new allocation BCSA20 which was formerly part of BCSA7
Map Mod 13	5.2 East	BEGA1A	Add boundary of new Neasden Growth Area policy.	To provide map for new Growth Area policy boundary.
Map Mod 14	5.2 East	BEGA1	Amend from former Growth Area boundary showing separate sites to one contiguous site allocation boundary.	To provide clarity on the site allocation boundary and reflecting separation from new Growth Area policy BEGA1A
Map Mod 15	5.3 North	BNGA1	Identify Burnt Oak Colindale Opportunity Area with a boundary consistent with the Burnt Oak Colindale Growth Area.	Provide clarity on Burnt Oak Colindale Opportunity Area for associated London Plan policies.
Map mod 16	5.7 South West	Local Green Space designation – Vale Farm	Removal of residential back gardens incorrectly included in the boundary.	Residential gardens not consistent with Local Green Space definition.
Map mod 17	5.7 South West	Open Space designation – Vale Farm	Removal of residential back gardens incorrectly included in the boundary.	Residential gardens not consistent with open space definition.
Map Mod 18	6.1 Design	BD2 – Tall Building Zones	Include Northfields and other parts of the Alperton Growth Area within the Alperton Tall Buildings Zone, remove the Core, and add appropriate heights	To reflect existing tall building consents and revised Tall Buildings Strategy for the Zone and Core is not referenced in Policy BD2. Include appropriate heights as identified in the Tall Building Strategy and required by London Plan policy.
Map Mod 19	6.1 Design	BD2 – Tall Building Zones	Burnt Oak/Colindale Tall Building Zone Remove the Core Designation, and add appropriate heights	Core is not referenced in Policy BD2. Include

Policy Map Change	Chapter	Policy	Modification Proposed	Reason for Modification
				appropriate heights as identified in the Tall Building Strategy and required by London Plan policy.
Map Mod 20	6.1 Design	BD2 – Tall Building Zones	Neasden Tall Building Zone Remove the Core Designation, and add appropriate heights	Core is not referenced in Policy BD2. Include appropriate heights as identified in the Tall Building Strategy and required by London Plan policy.
Map Mod 21	6.1 Design	BD2 – Tall Building Zones	Northwick Park Tall Building Zone Remove the Core Designation, and add appropriate heights	Core is not referenced in Policy BD2. Include appropriate heights as identified in the Tall Building Strategy and required by London Plan policy.
Map Mod 22	6.1 Design	BD2 – Tall Building Zones	South Kilburn Tall Building Zone Remove the Core Designation, and add appropriate heights	Core is not referenced in Policy BD2. Include appropriate heights as identified in the Tall Building Strategy and required by London Plan policy.
Map Mod 23	6.1 Design	BD2 – Tall Building Zones	Staples Corner Tall Building Zone Remove the Core Designation, and add appropriate heights	Core is not referenced in Policy BD2. Include appropriate heights as identified in the Tall Building Strategy and required by London Plan policy.

Policy Map Change	Chapter	Policy	Modification Proposed	Reason for Modification
Map Mod 24	6.1 Design	BD2 – Tall Building Zones	Stonebridge Tall Building Zone Remove Core Designation, extend the Zone but also take account of OPDC boundary and add appropriate heights	Core is not referenced in Policy BD2 and reflecting changes to BD2 removing flexibility for tall buildings outside zones. Removes part that previously encroached into OPDC area where the borough is no longer local planning authority. Include appropriate heights as identified in the Tall Building Strategy and required by London Plan policy.
Map Mod 25	6.1 Design	BD2 – Tall Building Zones	Wembley Tall Building Zone Remove Core Designation and extend the Zone, and add appropriate heights	Core is not referenced in Policy BD2 and reflecting changes to BD2 removing flexibility for tall buildings outside zones. Include appropriate heights as identified in the Tall Building Strategy and required by London Plan policy.
Map Mod 26	6.1 Design	BD2 – Tall Building Zones	Wembley Park Tall Building Zone Remove the Core Designation, and add appropriate heights	Core is not referenced in Policy BD2. Include appropriate heights as identified in the Tall Building Strategy and required by London Plan policy.
Map Mod 27	6.1 Design	BD2 – Tall Building Zones	Add Kilburn Square Tall Building Zone Designation, and add appropriate heights	Reflecting changes to BD2 removing flexibility for tall buildings outside

Policy Map Change	Chapter	Policy	Modification Proposed	Reason for Modification
				zones. Include appropriate heights as identified in the Tall Building Strategy and required by London Plan policy.
Map Mod 28	6.1 Design	BD2 – Tall Building Zones	Remove Tall Buildings Zone Pinnacle - Wembley	Pinnacle is not referenced in Policy BD2
Map Mod 29	6.1 Design	BD2 – Tall Building Zones	Remove Tall Buildings Zone Pinnacle – Burnt Oak	Pinnacle is not referenced in Policy BD2
Map Mod 30	6.2 Housing	BH2 - Intensification Corridors	Remove existing intensification corridors and replace with new intensification corridors notation taking account of Intensification Corridors Justification Paper	Remove specific site boundaries and replace with line to show the corridors as identified by Intensification Corridor justification paper.
Map Mod 31	6.4 Economy & Town Centres	BE2	Amend boundary of Northfields East SIL to take account of planning permission 18/0321 where the principle of the loss of the site to predominantly residential development has been approved.	To provide clarity regarding the status of the site to no longer be considered as a Strategic Industrial Location.
Map Mod 32	6.4 Economy & Town Centres	BE2	Amend Wembley Strategic Industrial Location boundary.	Ikea and Tesco removed as long standing existing retail uses and not justified as Strategic Industrial Location designation.

## Map Mod 1 Identify Safeguarded Waste Sites as set out in the West London Waste Plan – Alperton

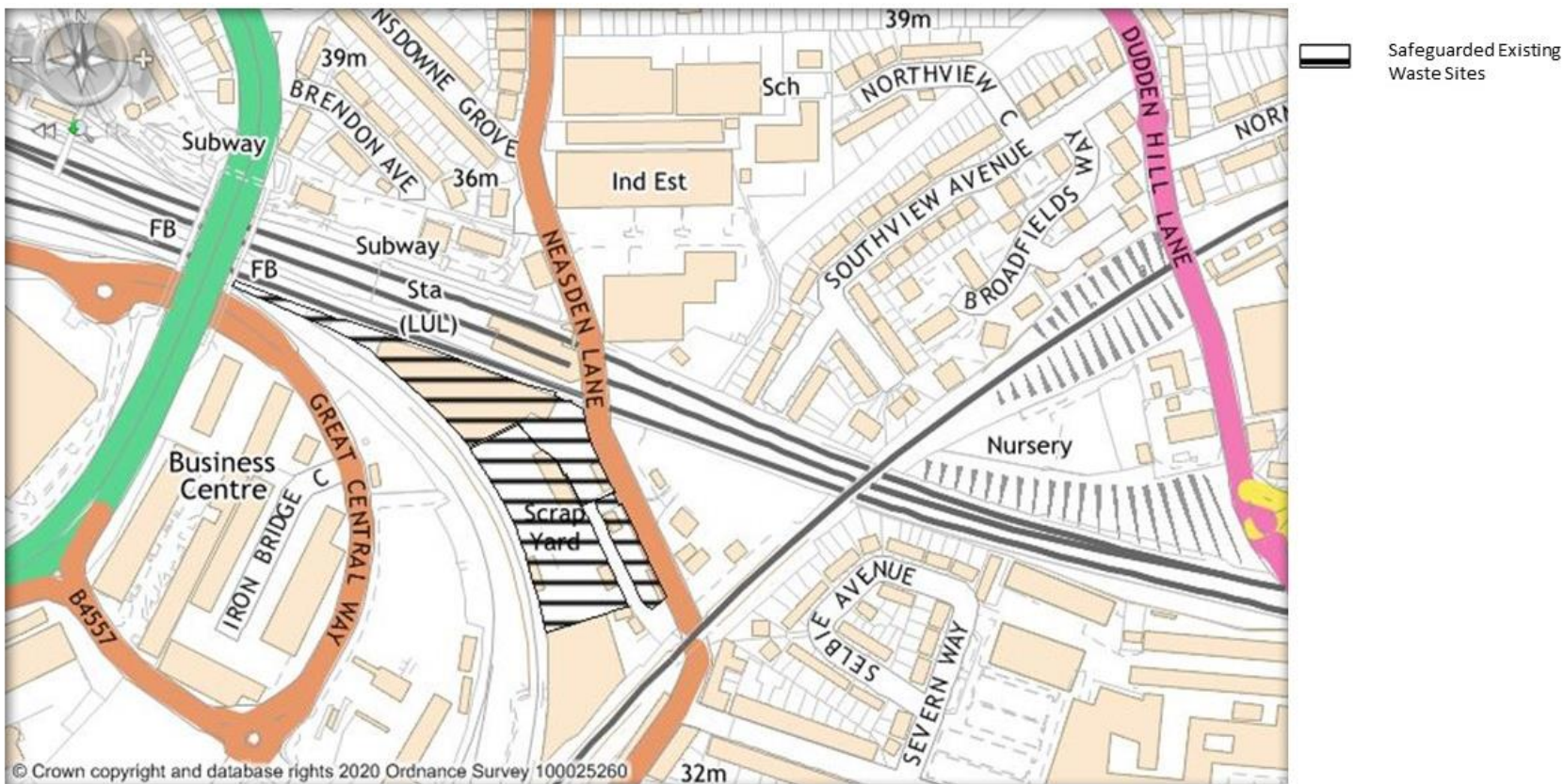


## Map Mod 2 Identify Safeguarded Waste Sites as set out in the West London Waste Plan – Mount Pleasant

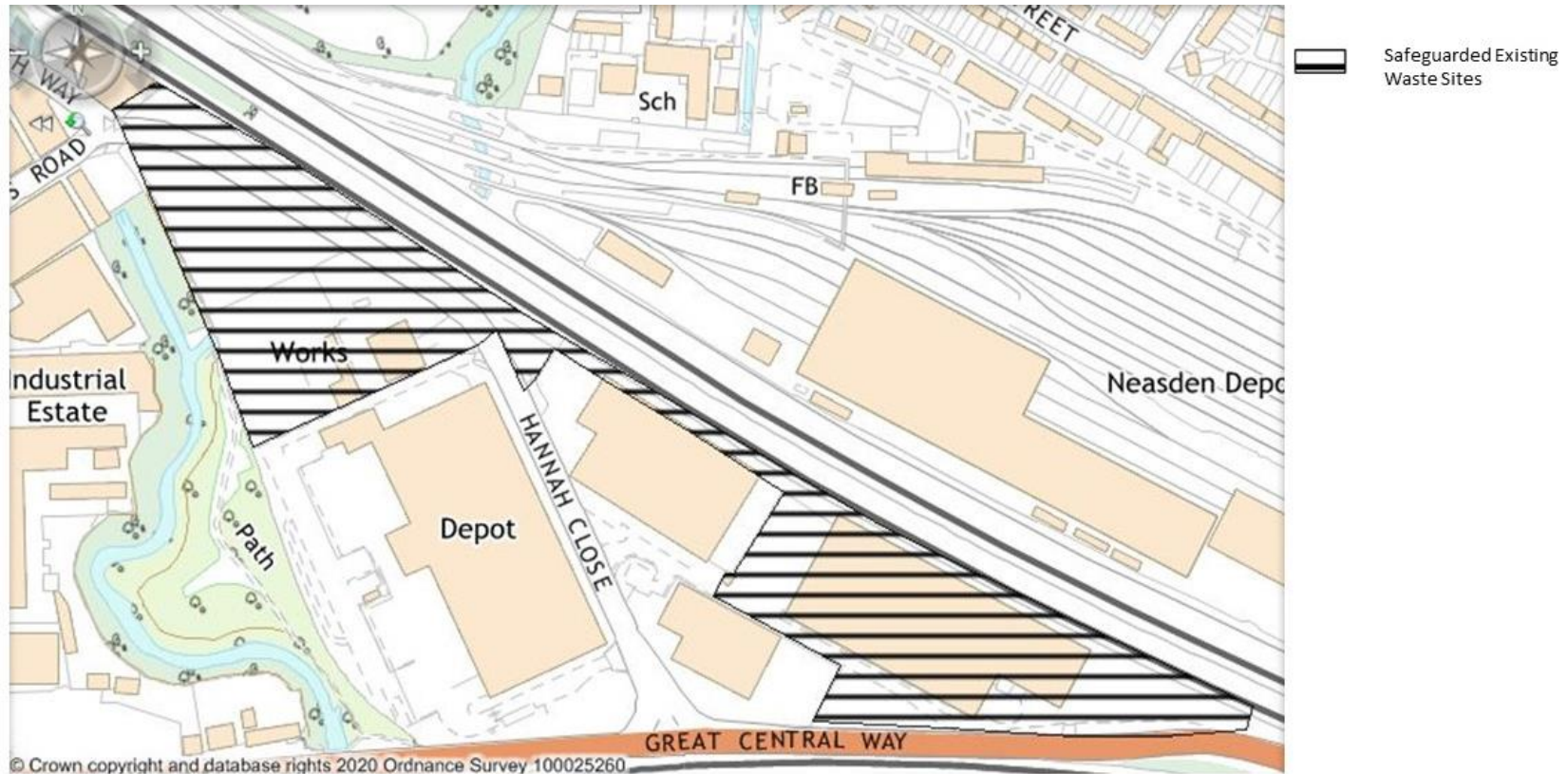




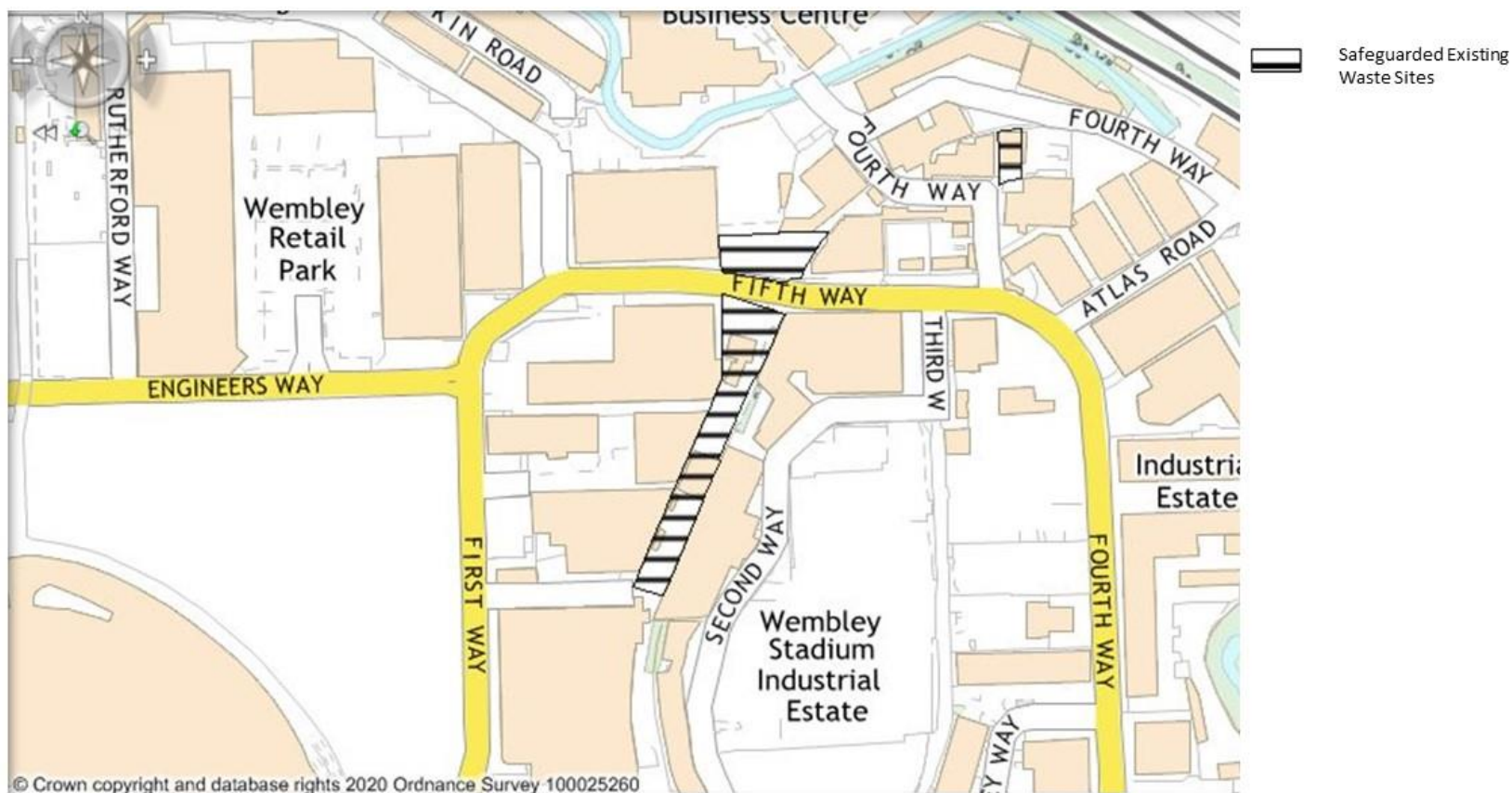
### Map Mod 3 Identify Safeguarded Waste Sites as set out in the West London Waste Plan – Neasden



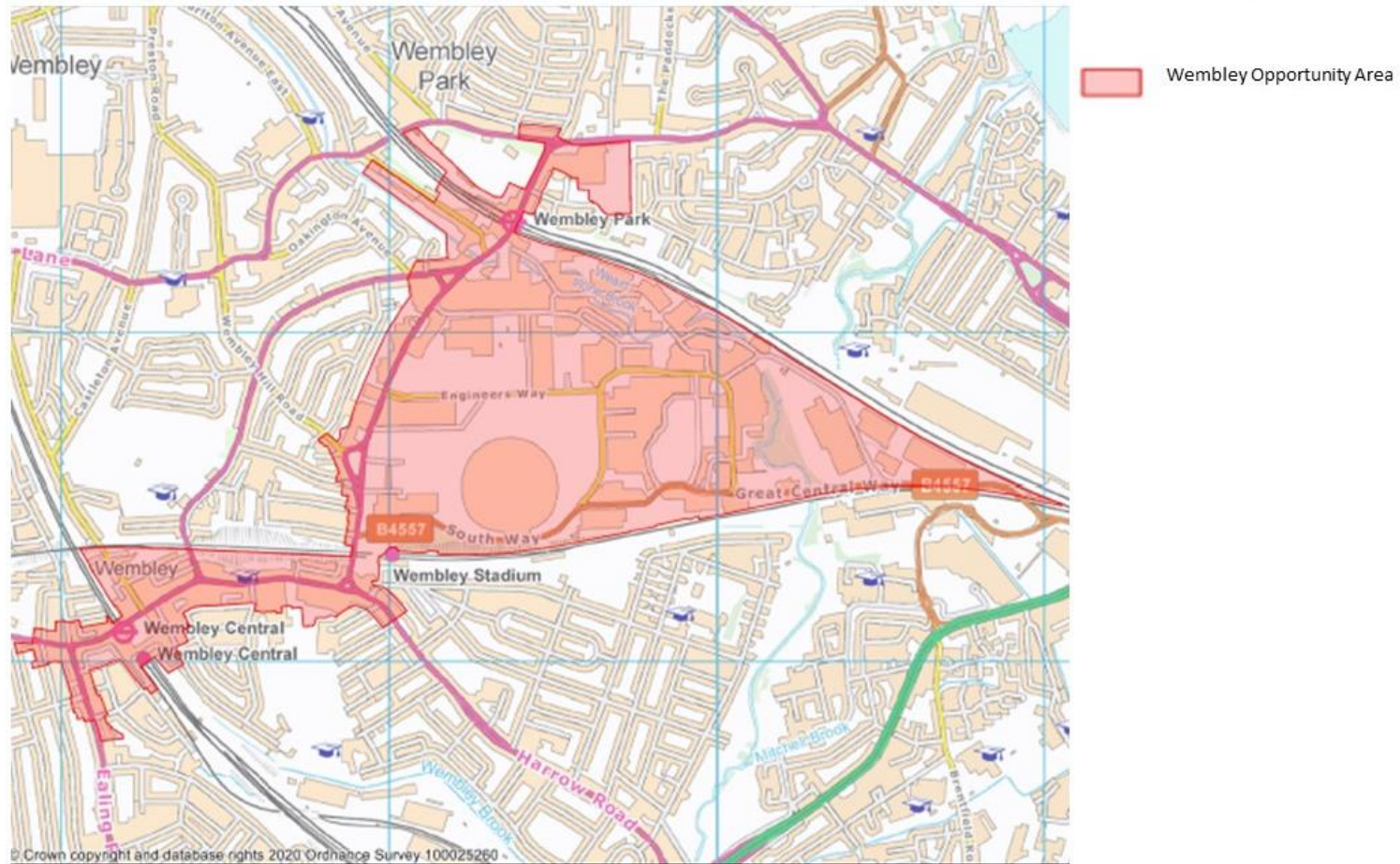
## Map Mod 4 Identify Safeguarded Waste Sites as set out in the West London Waste Plan – Wembley Hannah Close



## Map Mod 5 Identify Safeguarded Waste Sites as set out in the West London Waste Plan – Wembley Fourth and Fifth Way

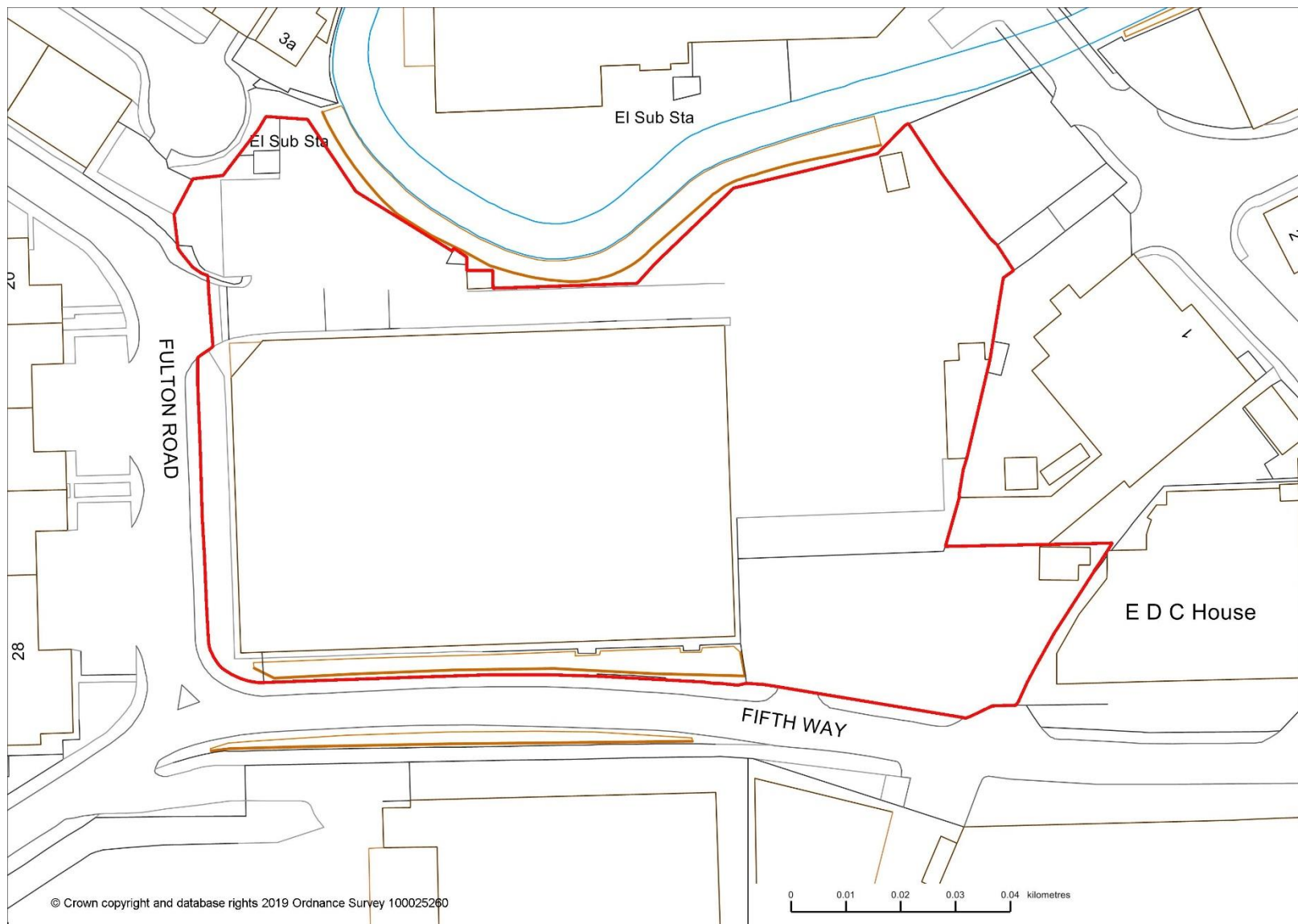


**Map Mod 6 Identify Wembley Opportunity Area with a boundary consistent with the Wembley Growth Area.**



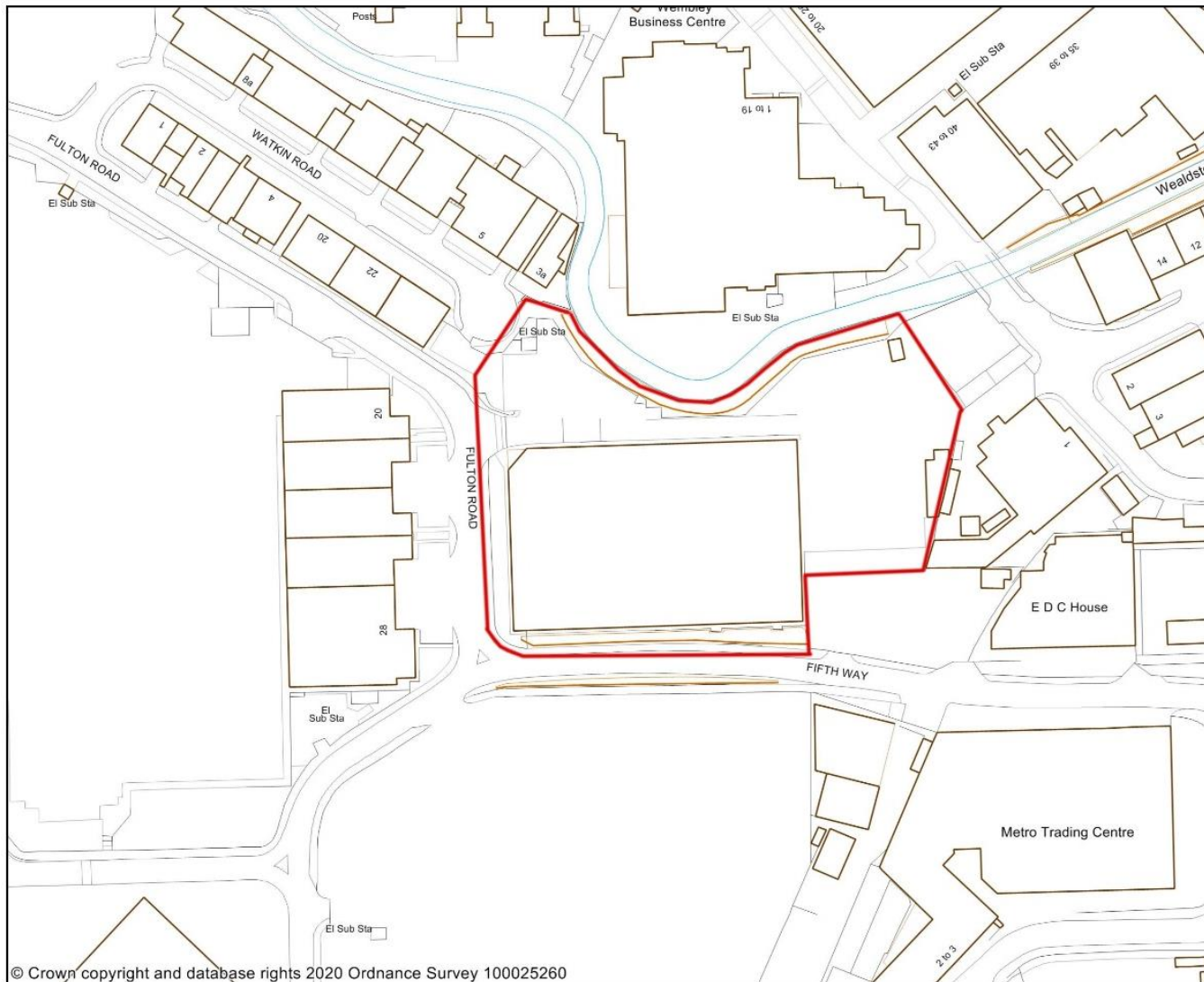
**Map Mod 7 Edit boundary of BCSA4 to remove boundary of waste site to be added to BCSA9.**

**Before**



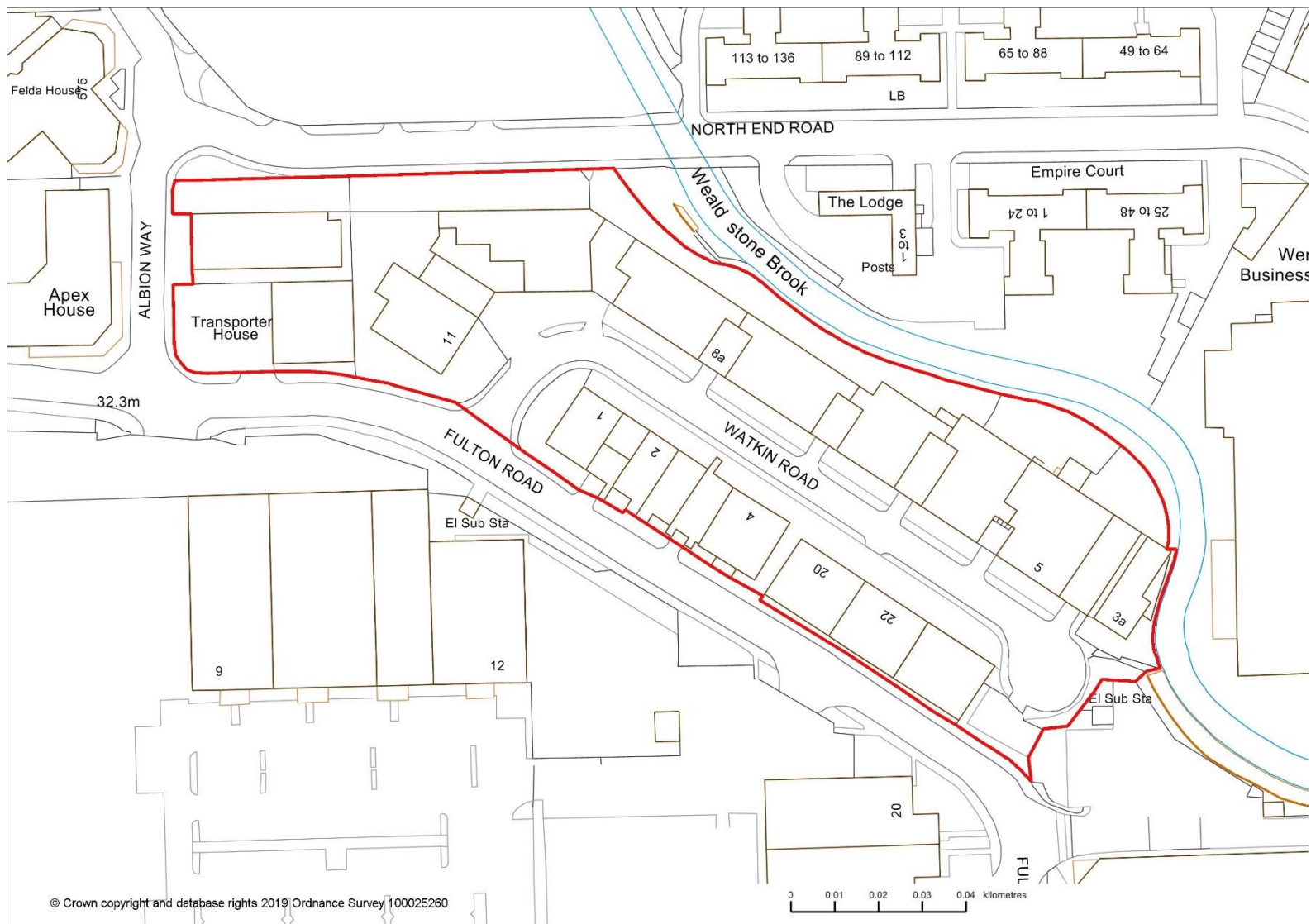
**Map Mod 7 Edit boundary of BCSA4 to remove boundary of waste site to be added to BCSA9.**

**After**



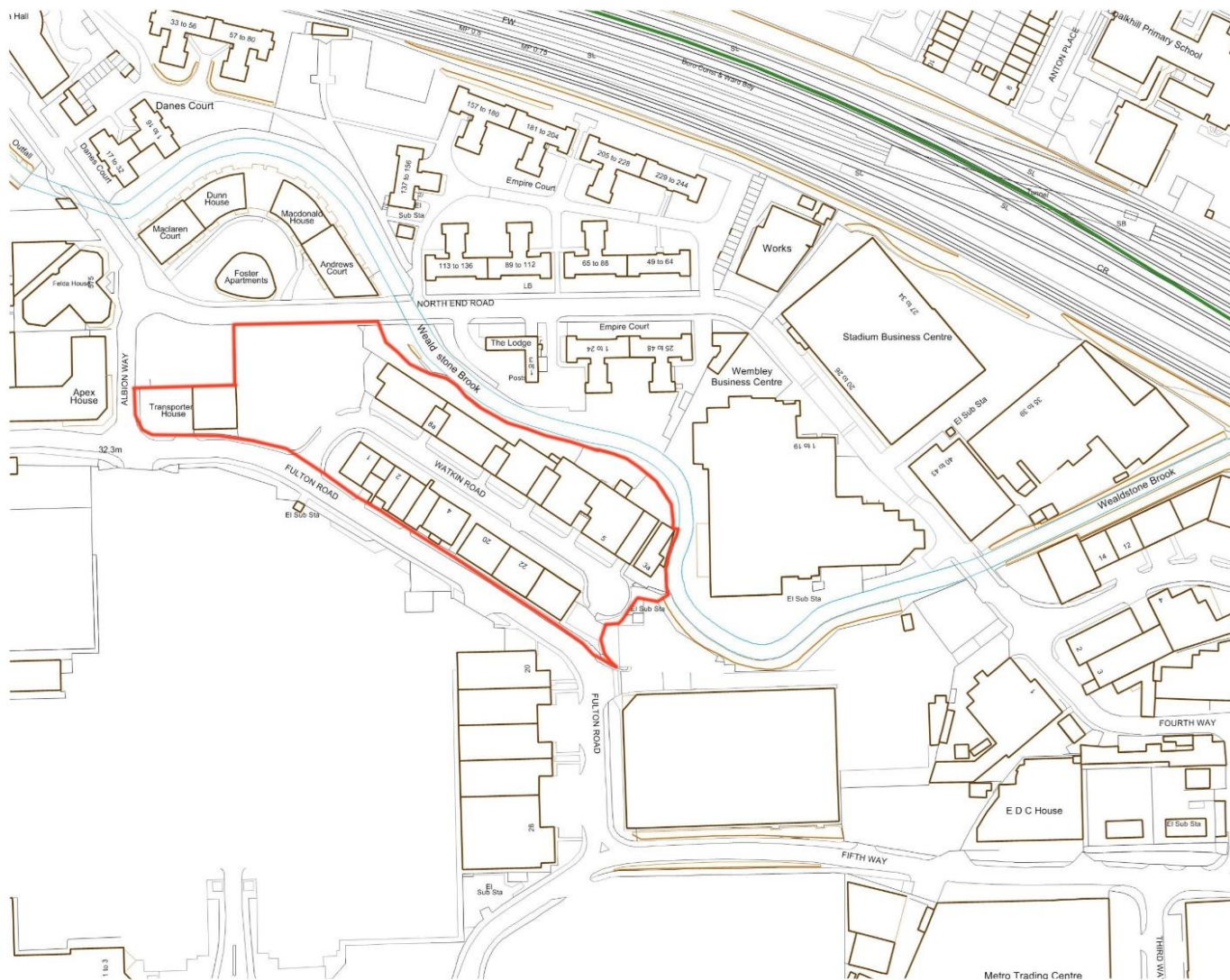
# Map Mod 8 Edit boundary of BCSA6 to remove boundary of completed development site.

Before



# Map Mod 8 Edit boundary of BCSA6 to remove boundary of completed development site.

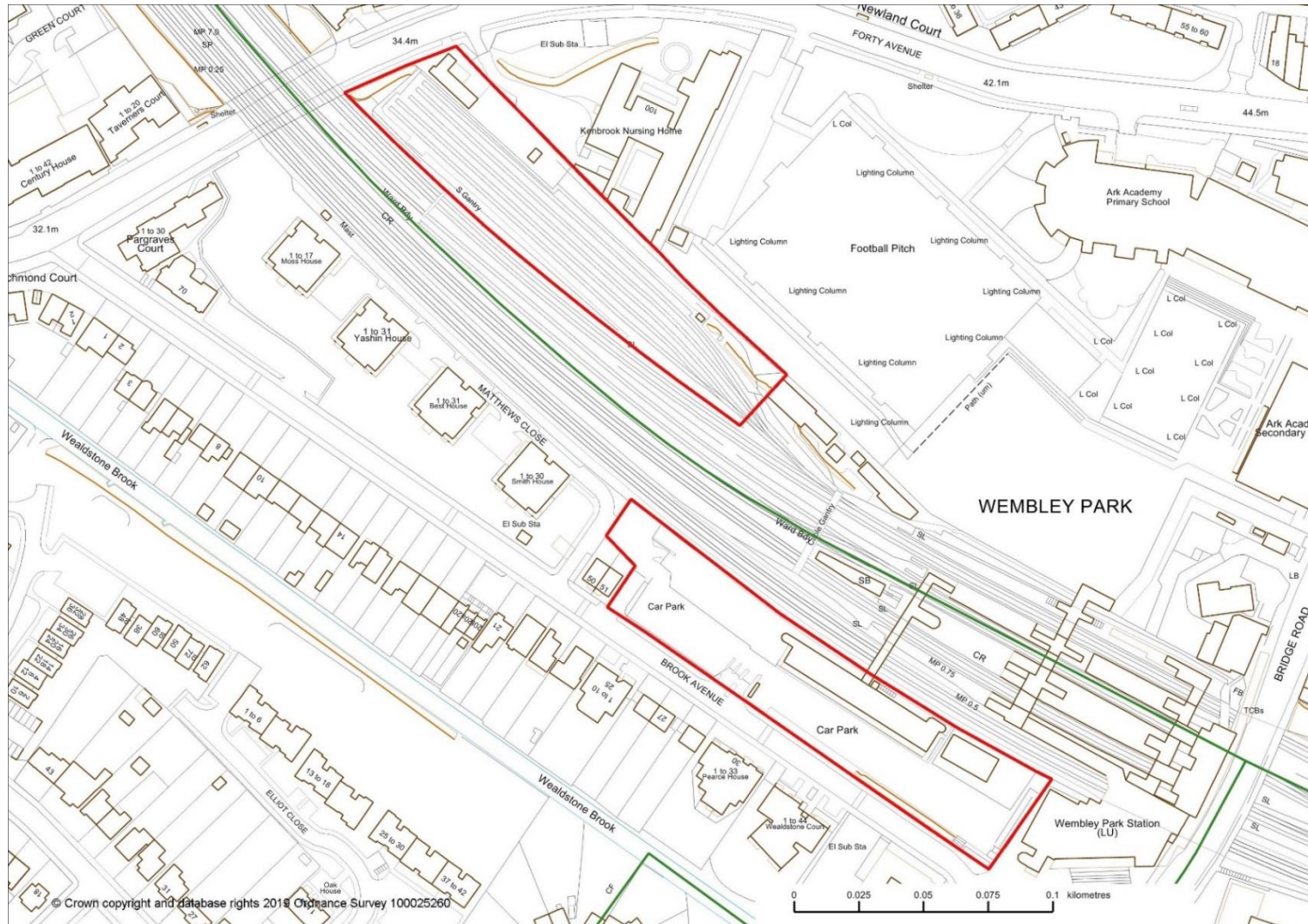
After





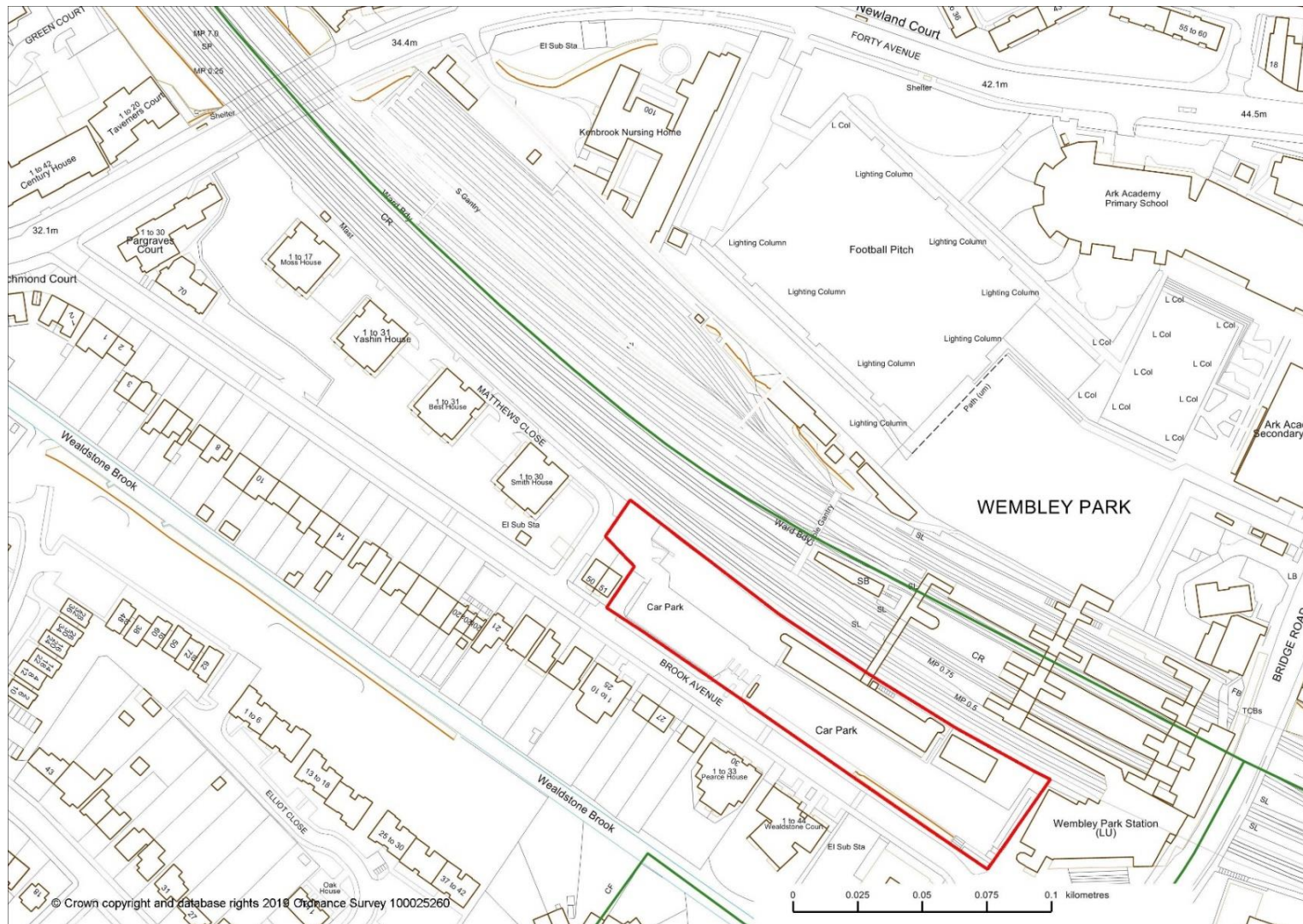
**Map Mod 9 Edit boundary of BCSA7 to remove boundary of northern development area which will be a separate allocation BCSA20.**

**Before**



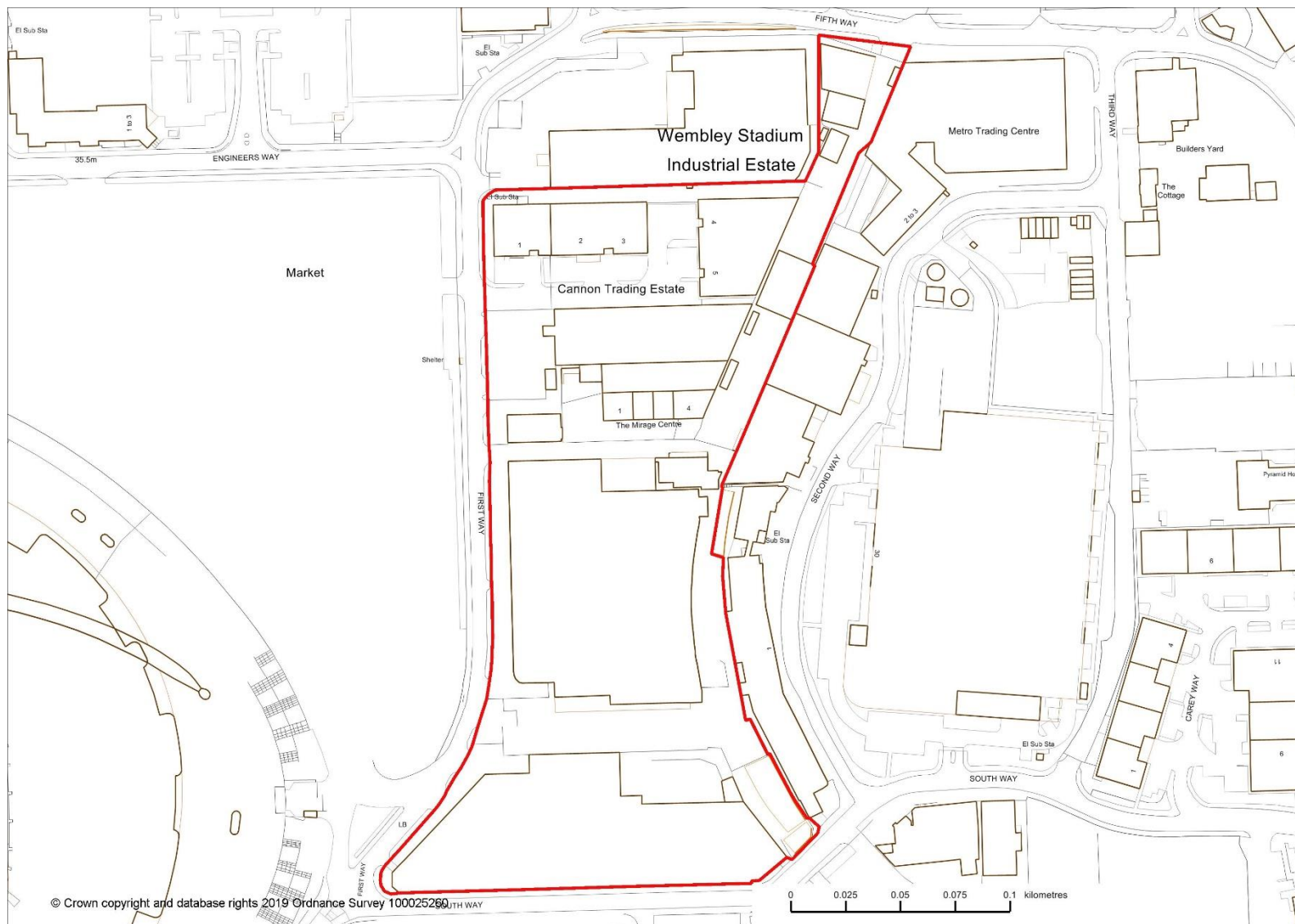
**Map Mod 9 Edit boundary of BCSA7 to remove boundary of northern development area which will be a separate allocation BCSA20.**

**After**



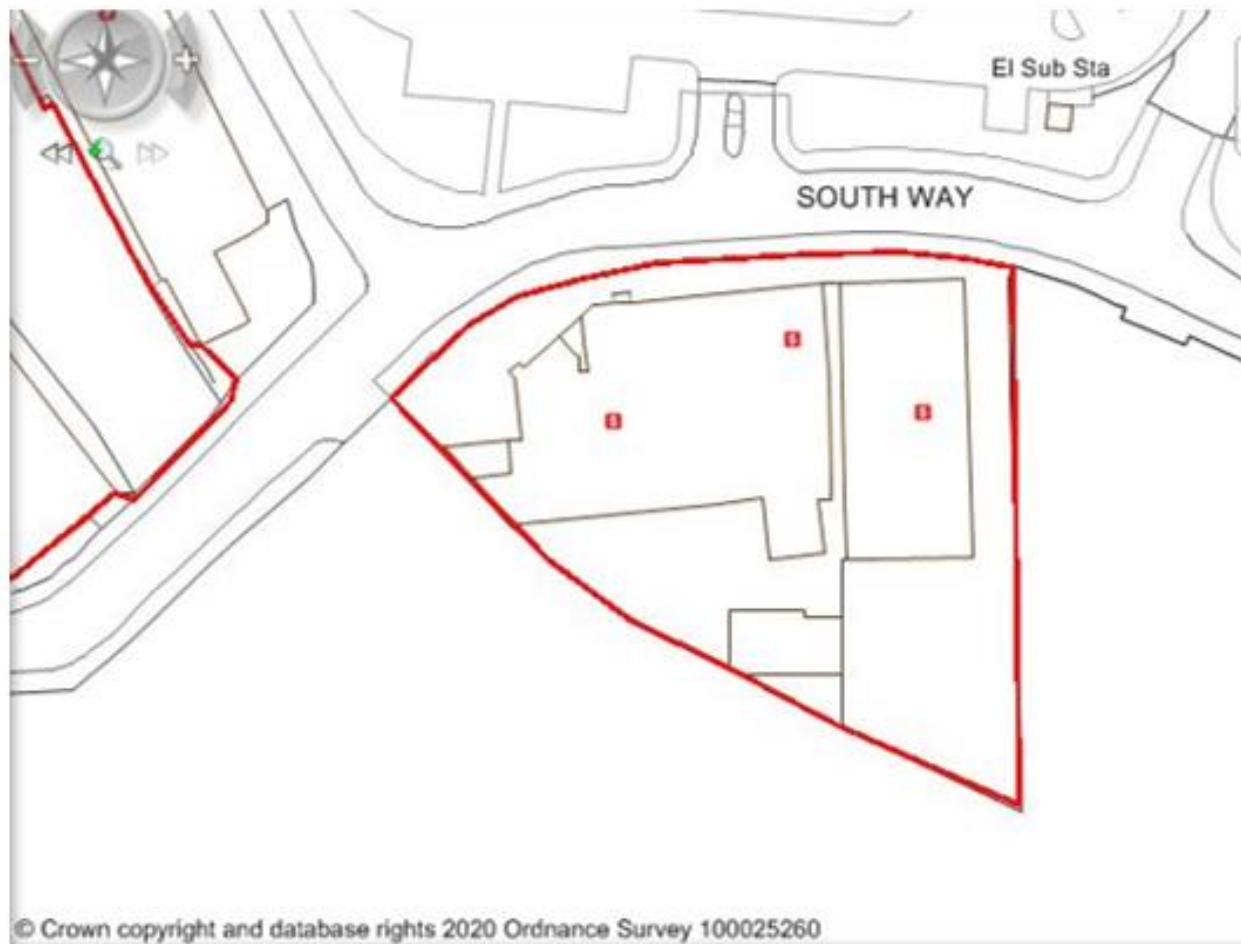
## Map Mod 10 Edit boundary of BCSA9 to add waste site from BCSA4.

Before



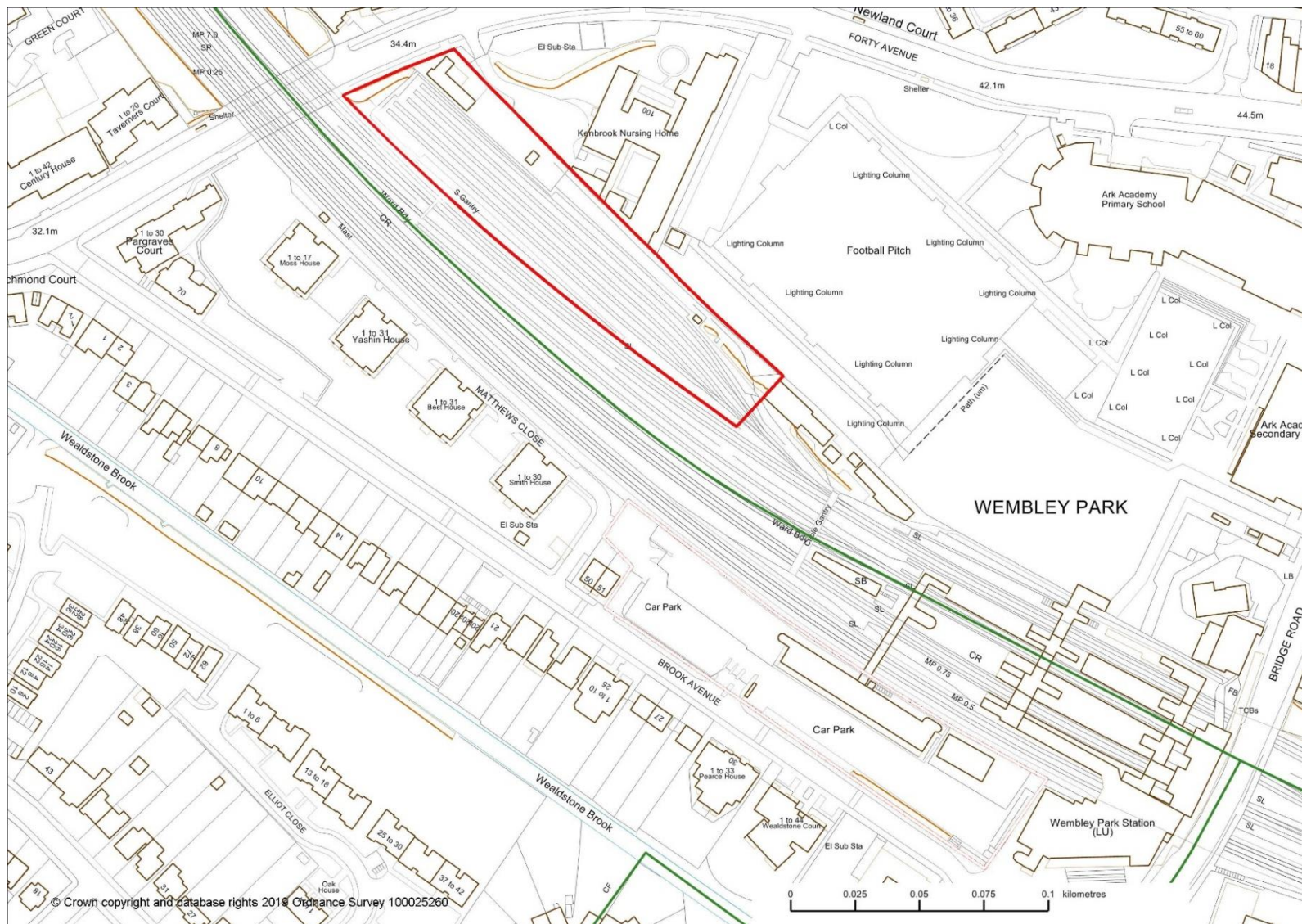


**Map Mod 11 Remove BCSA17 shown as a Site Allocation Boundary from the Map.**

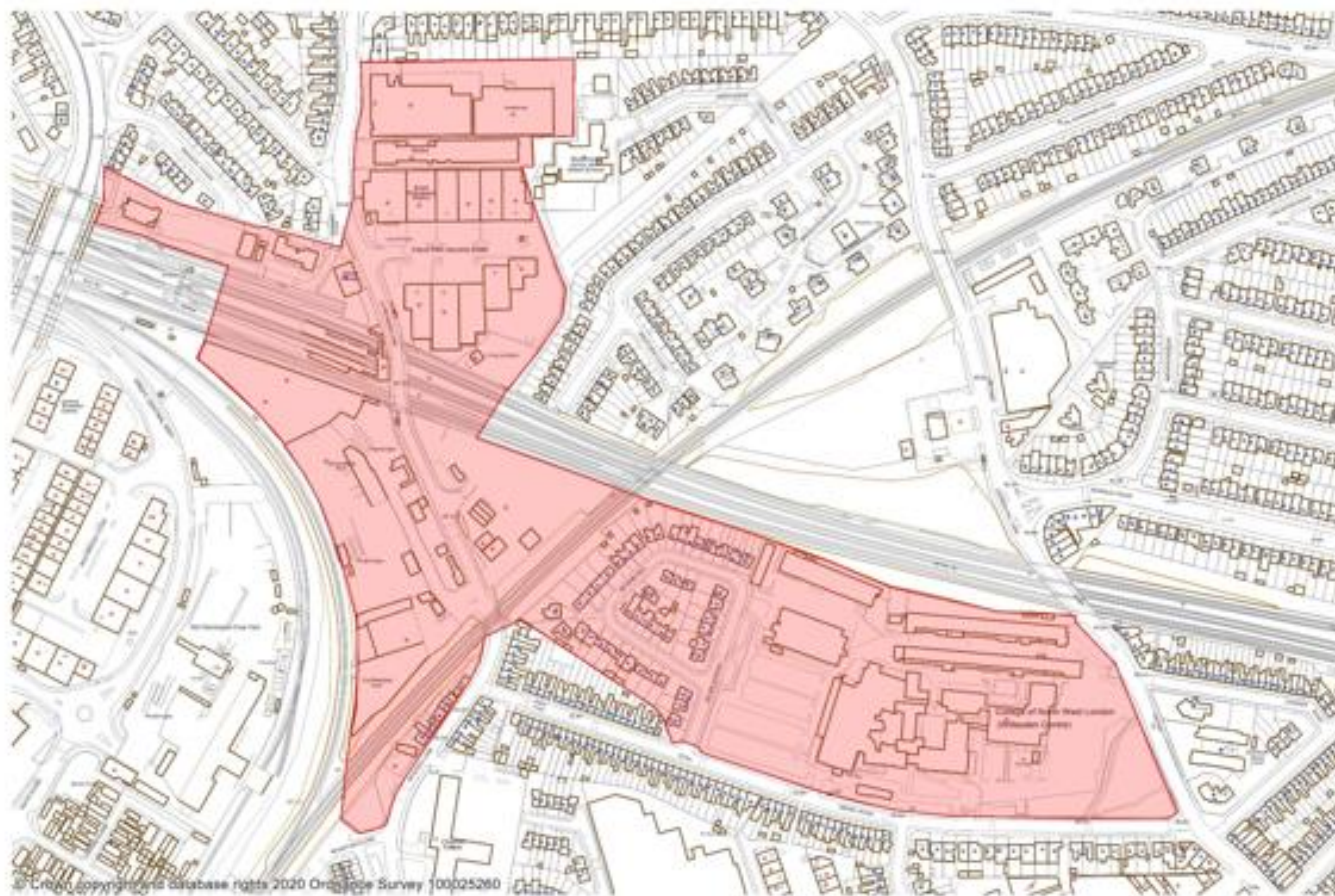


# Map Mod 12 Add site Allocation BCSA20 (formerly part of BCSA7).

After

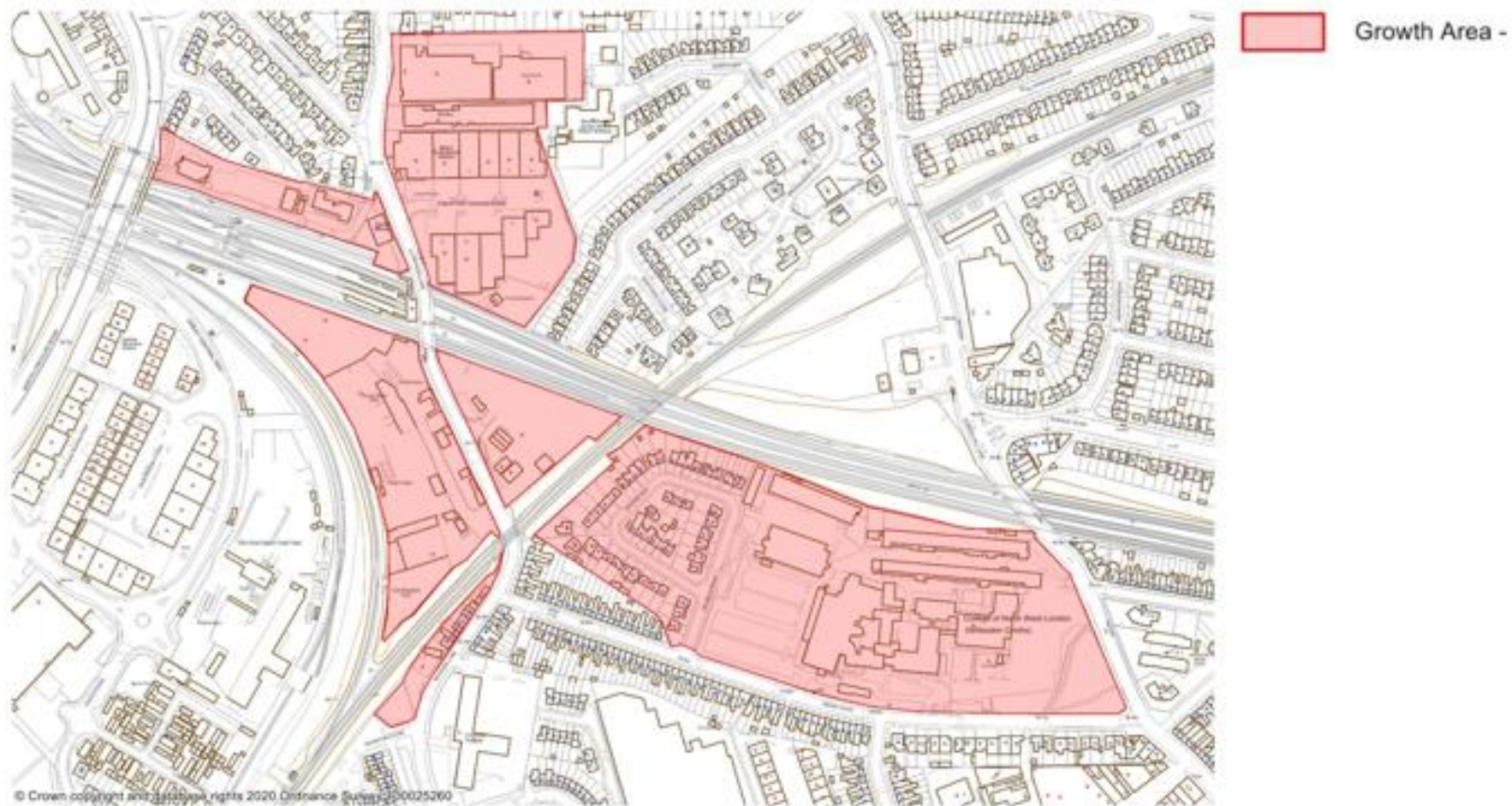


## Map Mod 13 Add boundary of New Neasden Growth Area Policy BEGA1A



# Map Mod 14 Remove Policy BEGA1 Growth Area Designation and replace with Site Allocation Designation

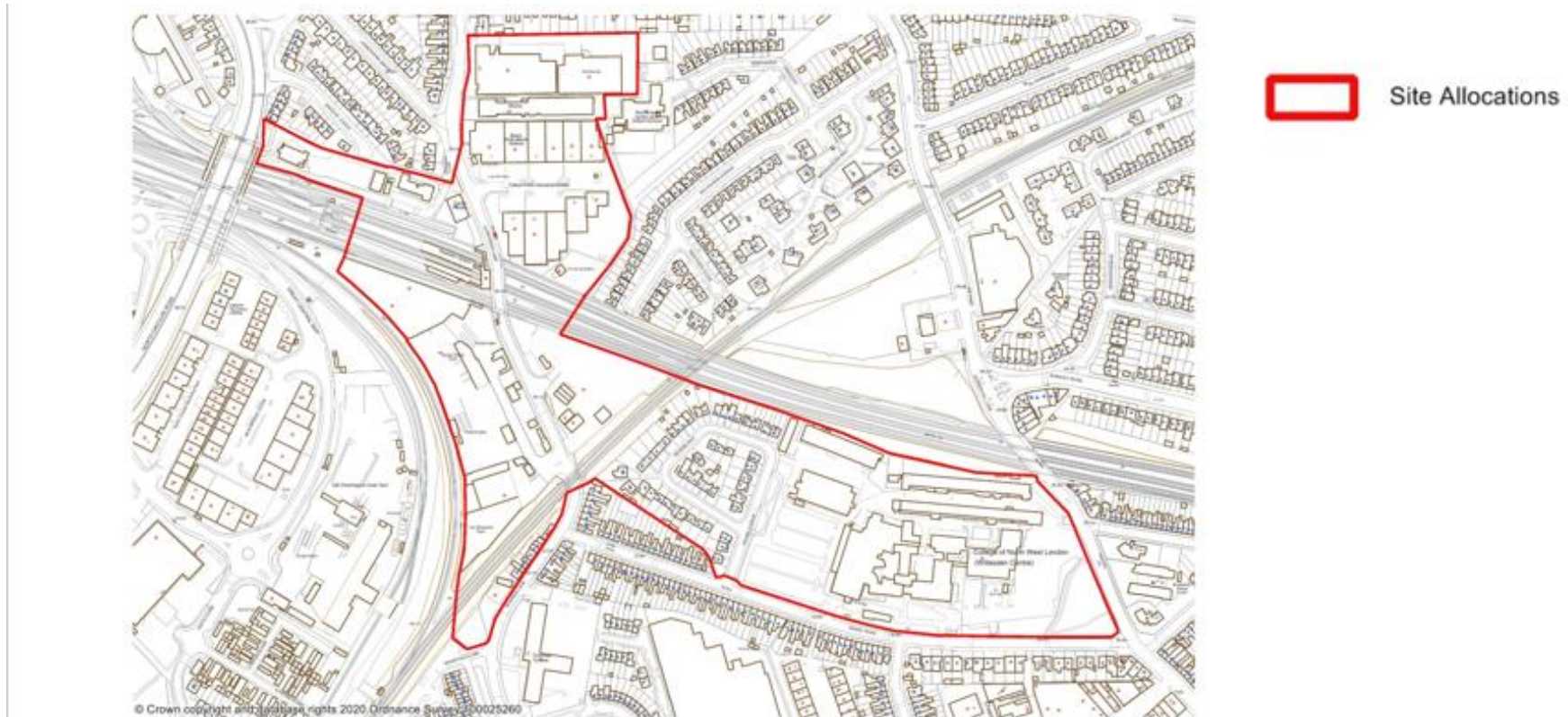
Before



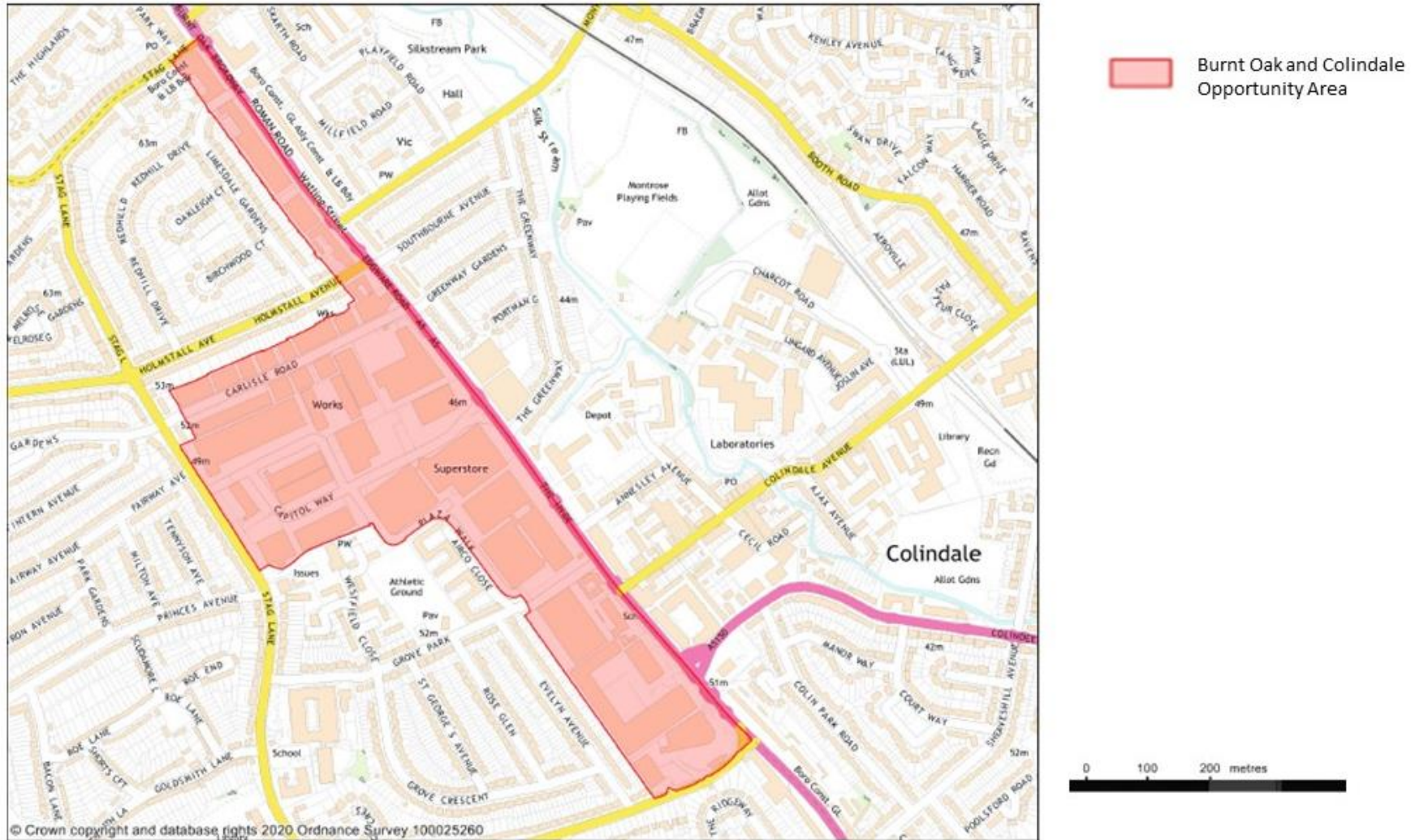


## Map Mod 14 Remove Policy BEGA1 Growth Area Designation and replace with Site Allocation Designation

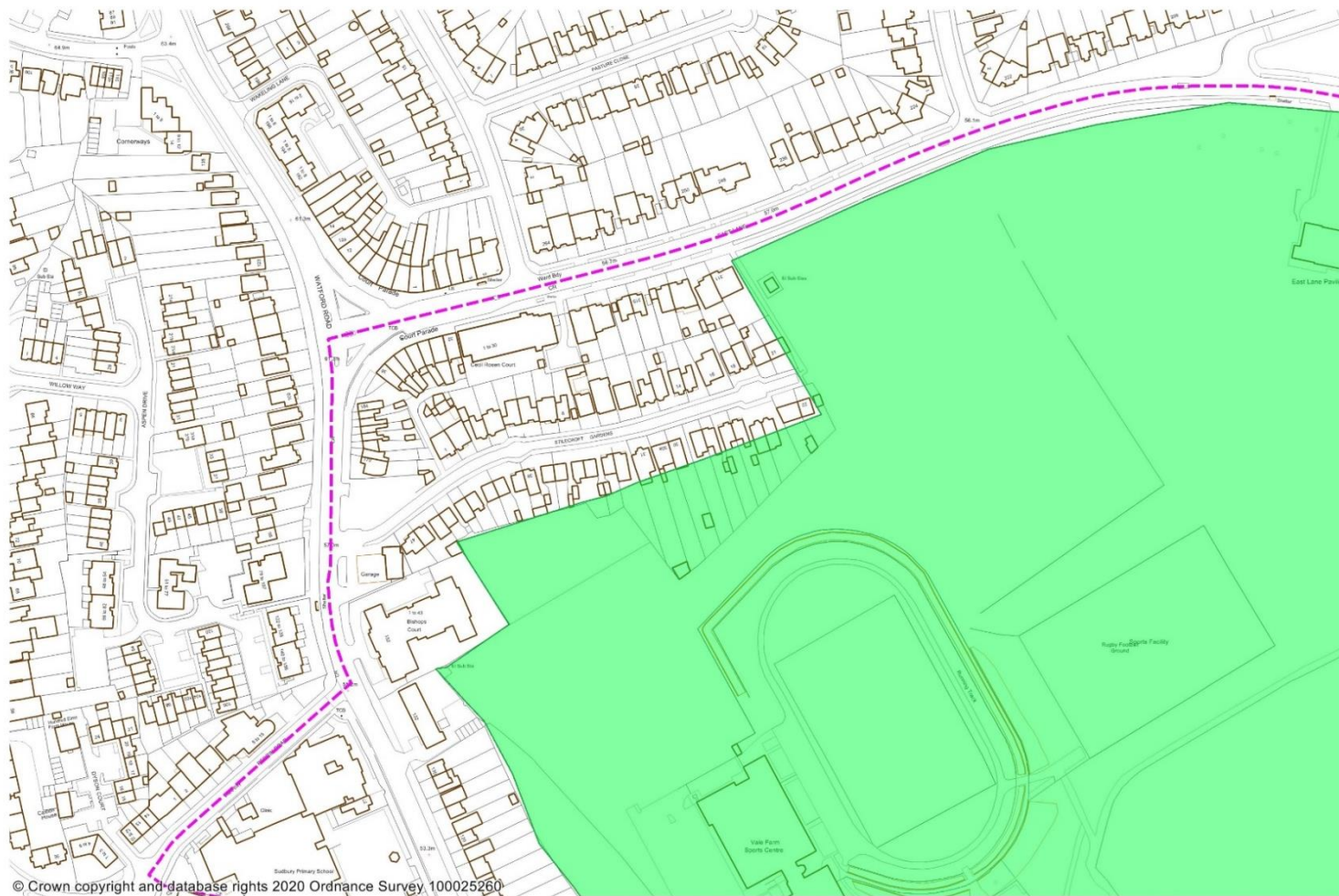
After



# Map Mod 15 Identify Burnt Oak Colindale Opportunity Area with a boundary consistent with the Burnt Oak Colindale Growth Area

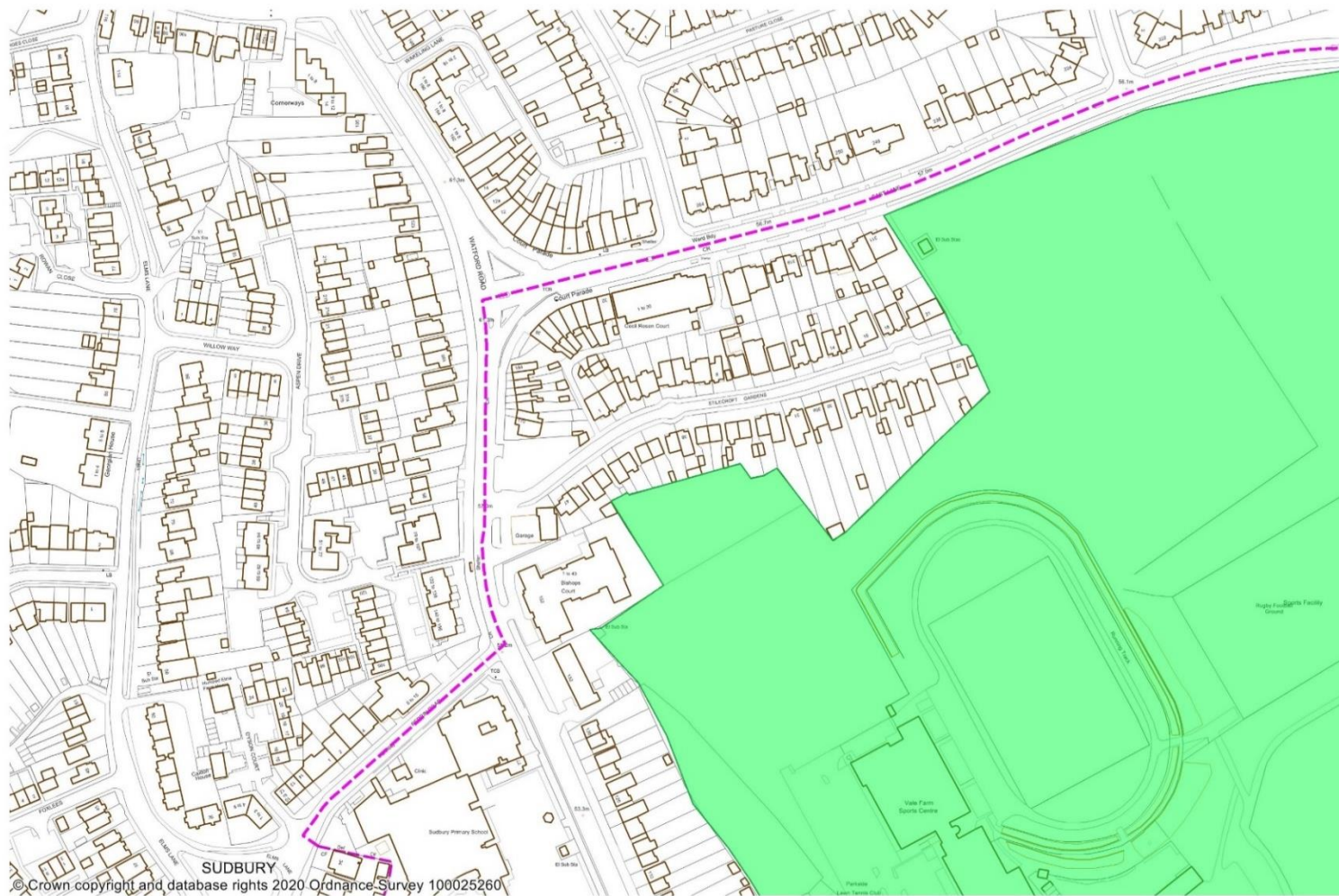


# Map Mod 16 Vale Farm Local Green Space designation boundary amendment to remove gardens Before



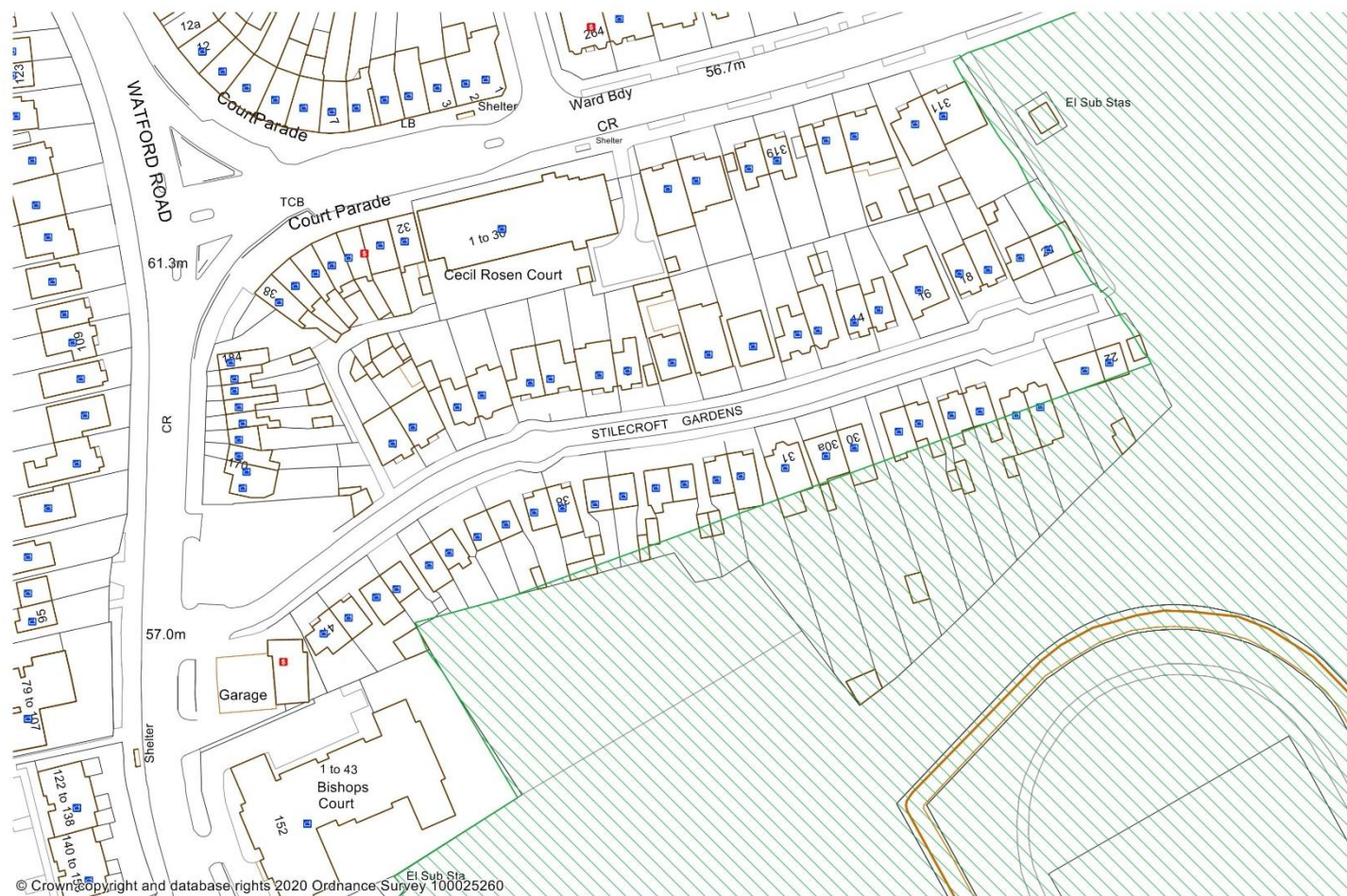
# Map Mod 16 Vale Farm Local Green Space designation boundary amendment to remove gardens

## After



# Map Mod 17 Vale Farm Open Space designation boundary amendment to remove gardens

Before

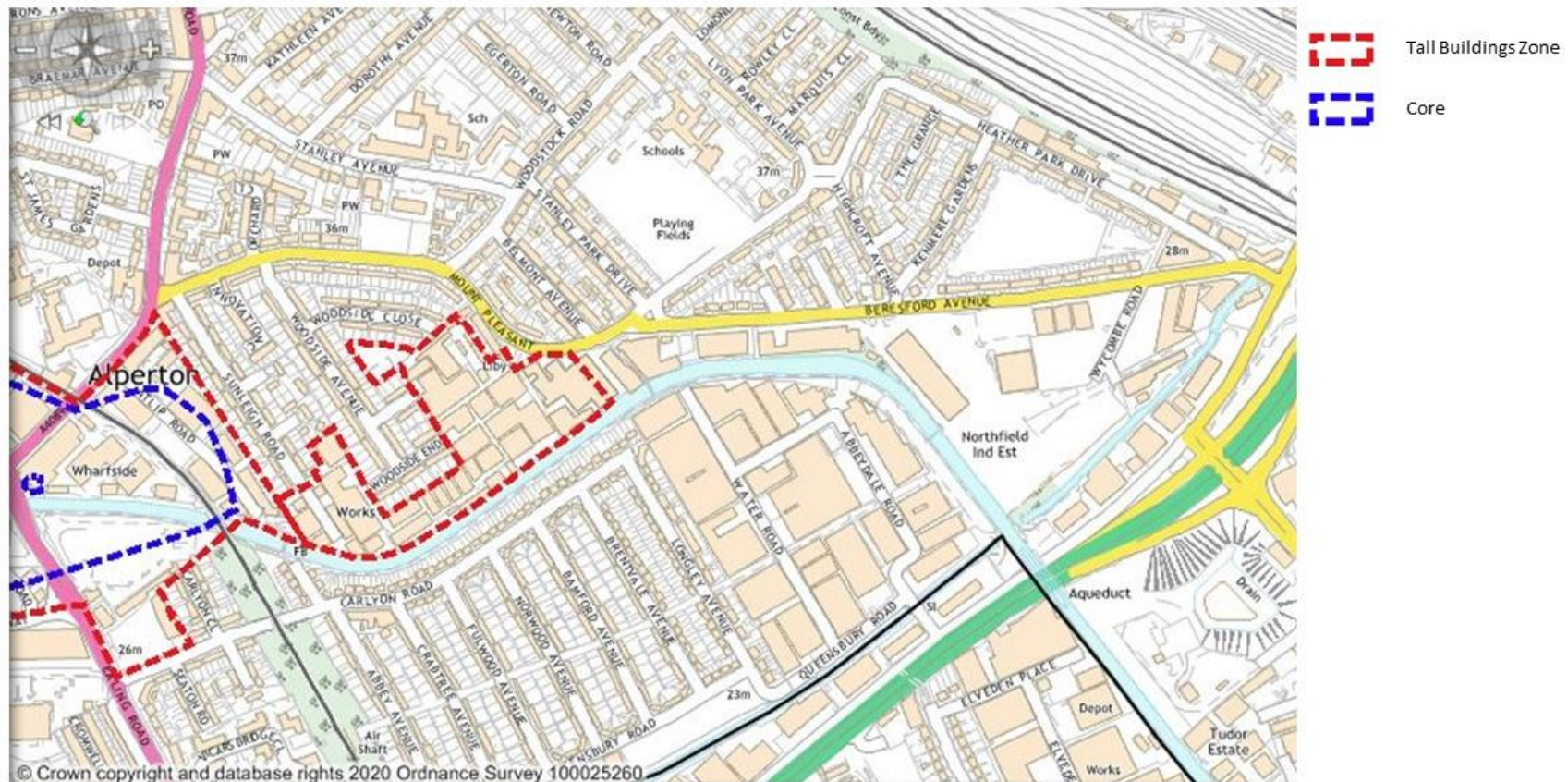


**Map Mod 17 Vale Farm Open Space designation boundary amendment to remove gardens**  
**After - remove area within orange polygon**



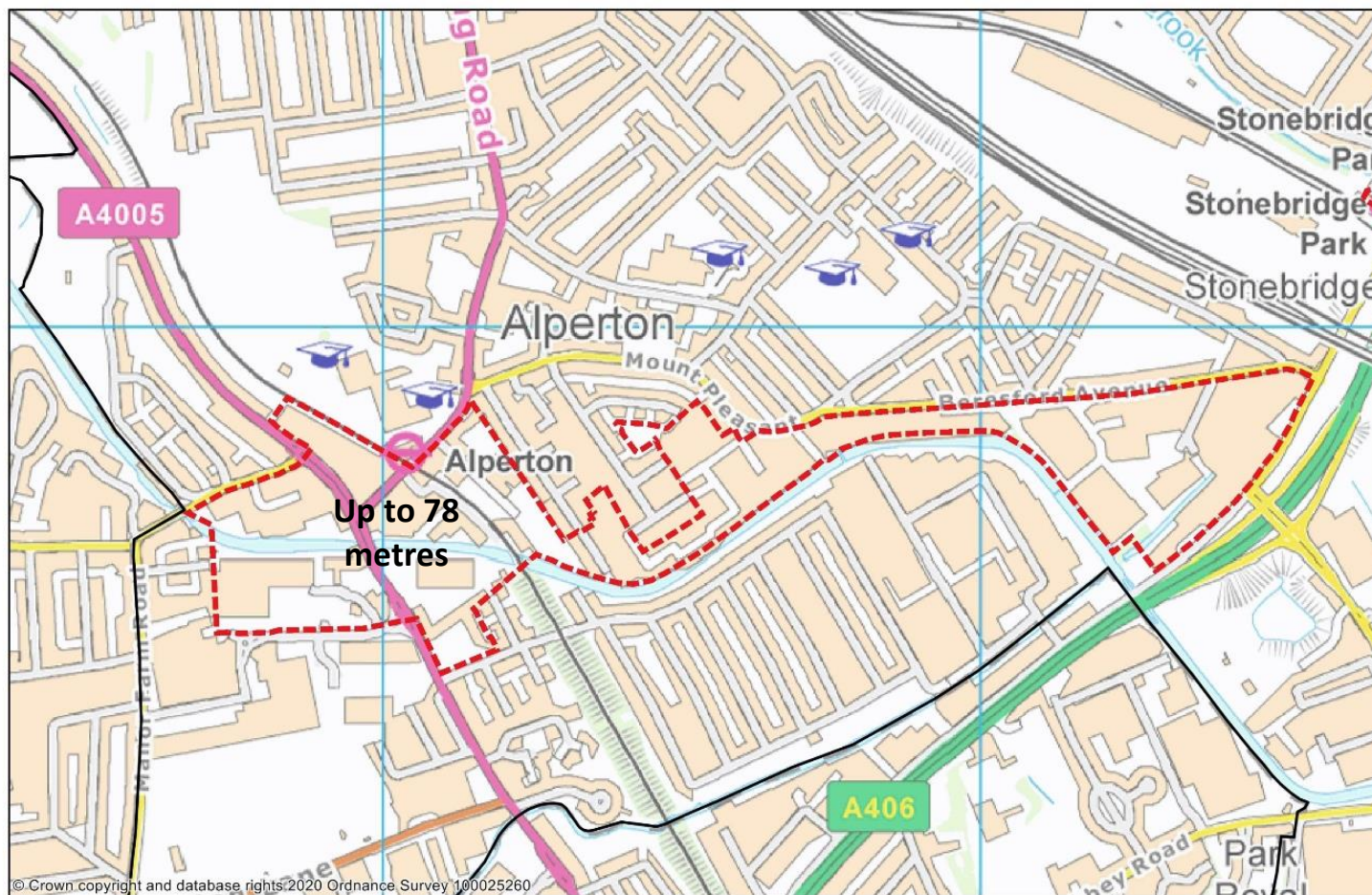
# Map Mod 18 Include Northfields and other parts of the Alperton Growth Area within the Alperton Tall Buildings Zone and remove the Core designation.

Before



**Map Mod 18 Include Northfields and other parts of the Alperton Growth Area within the Alperton Tall Buildings Zone and remove the Core designation.**

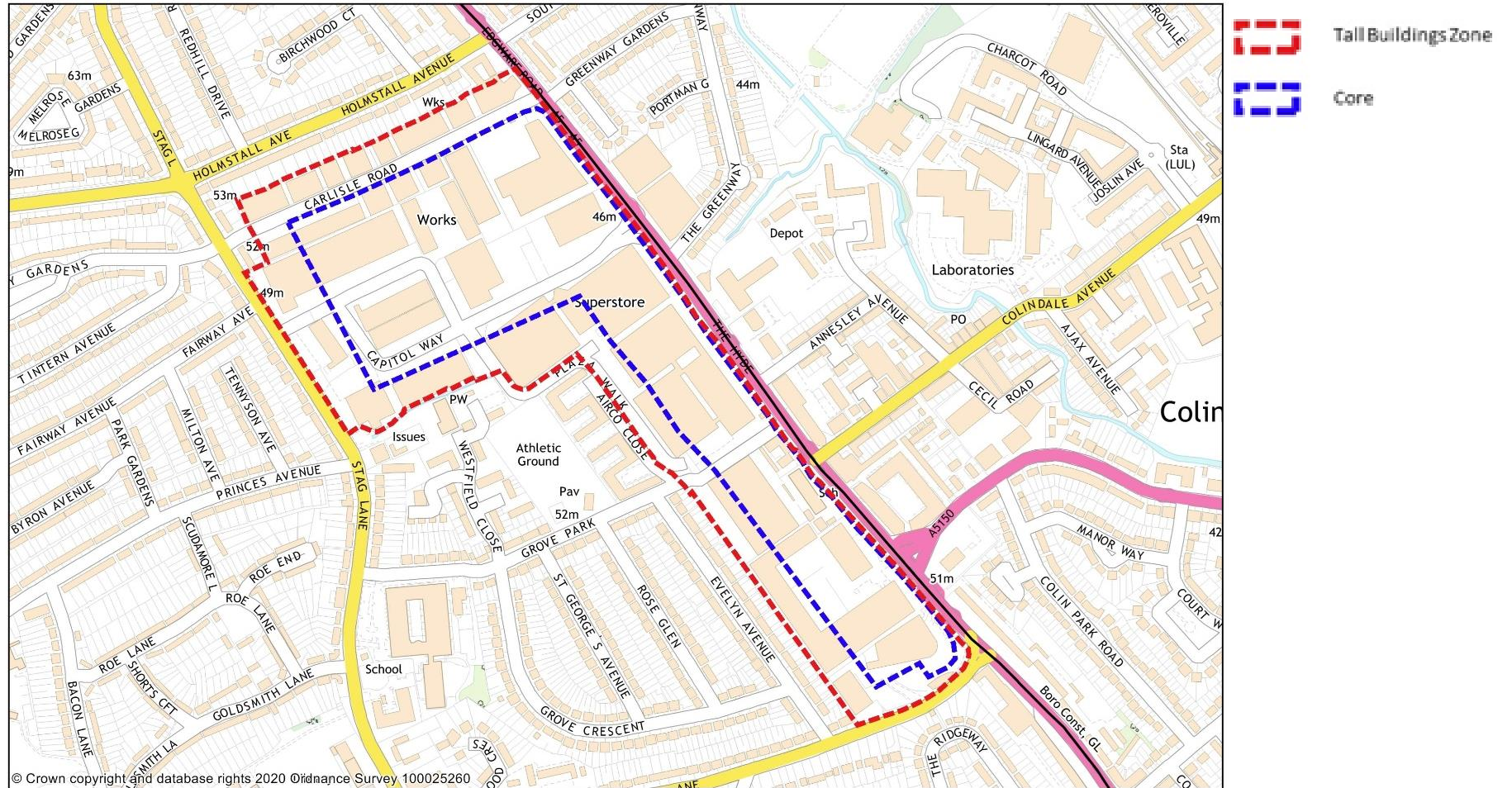
**After**





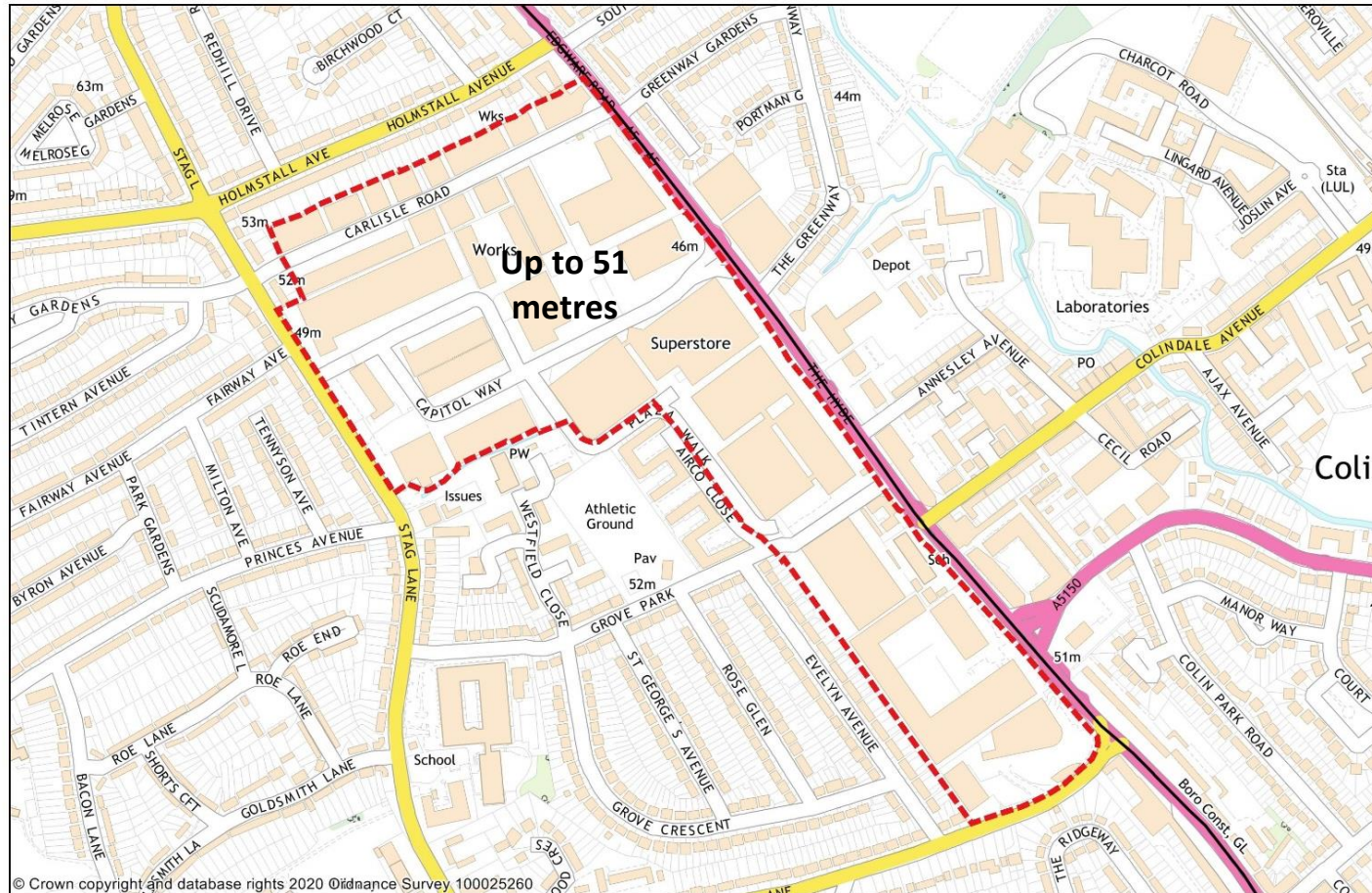
# Map Mod 19 Burnt Oak/ Colindale Tall Building Zone remove the Core designation.

Before



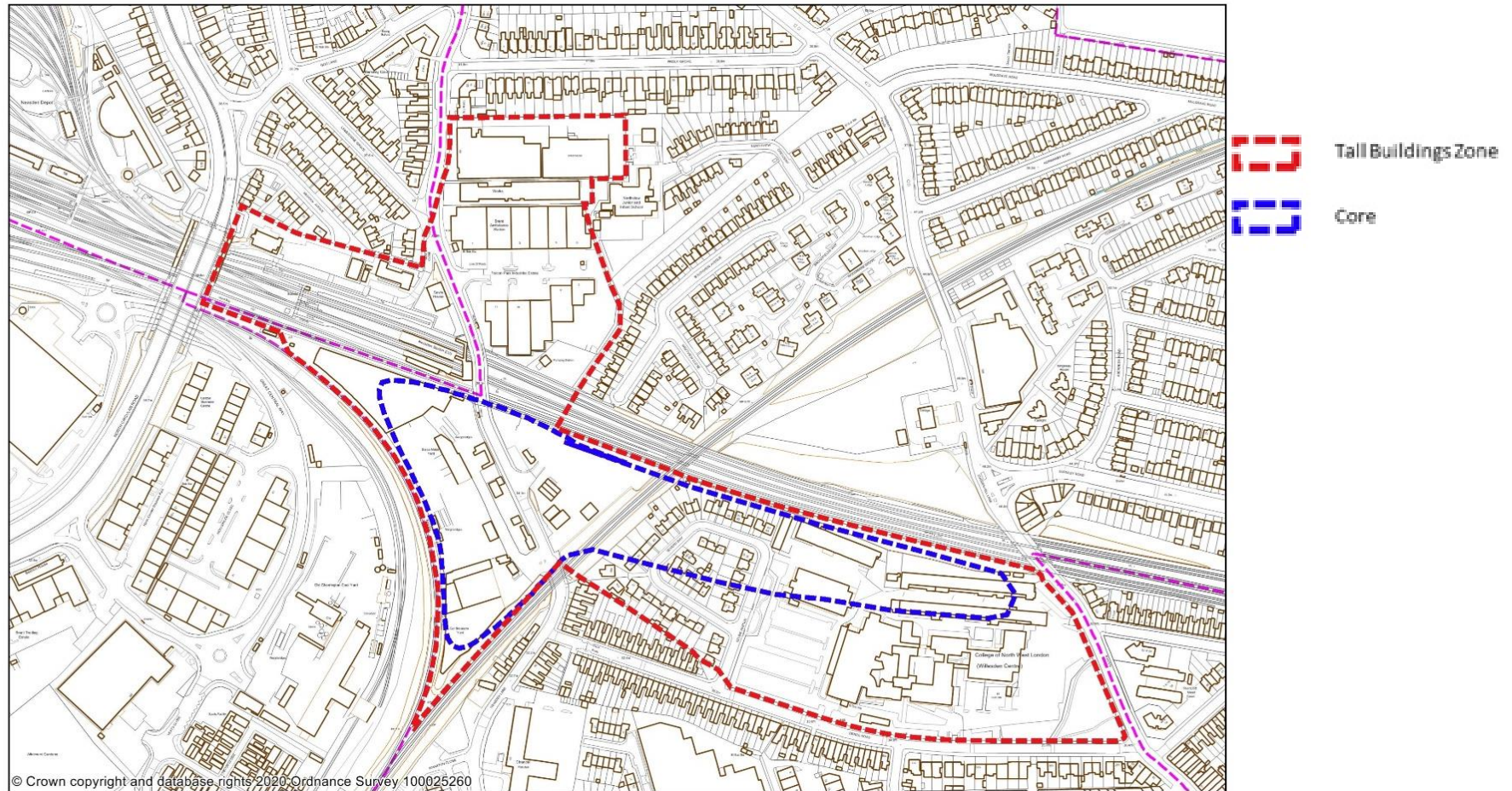
# Map Mod 19 Burnt Oak/ Colindale Tall Building Zone remove the Core designation.

After



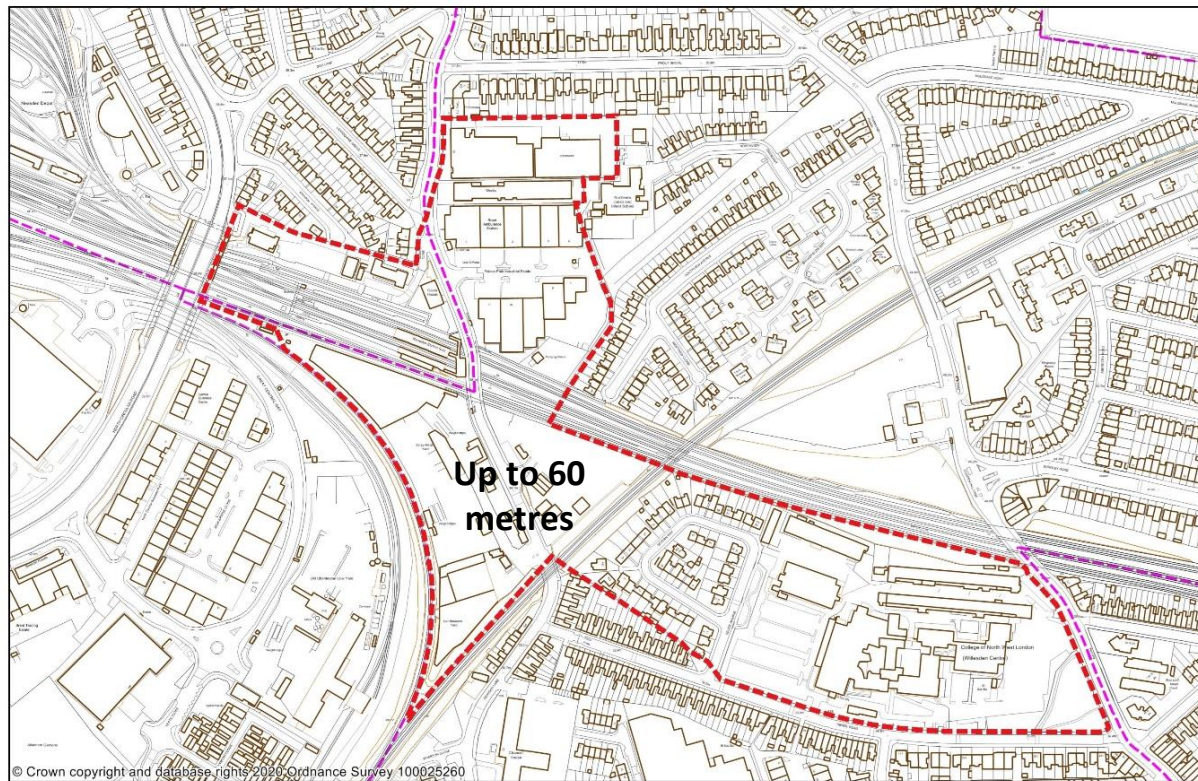
# Map Mod 20 Neasden Tall Building Zone remove the Core designation.

Before



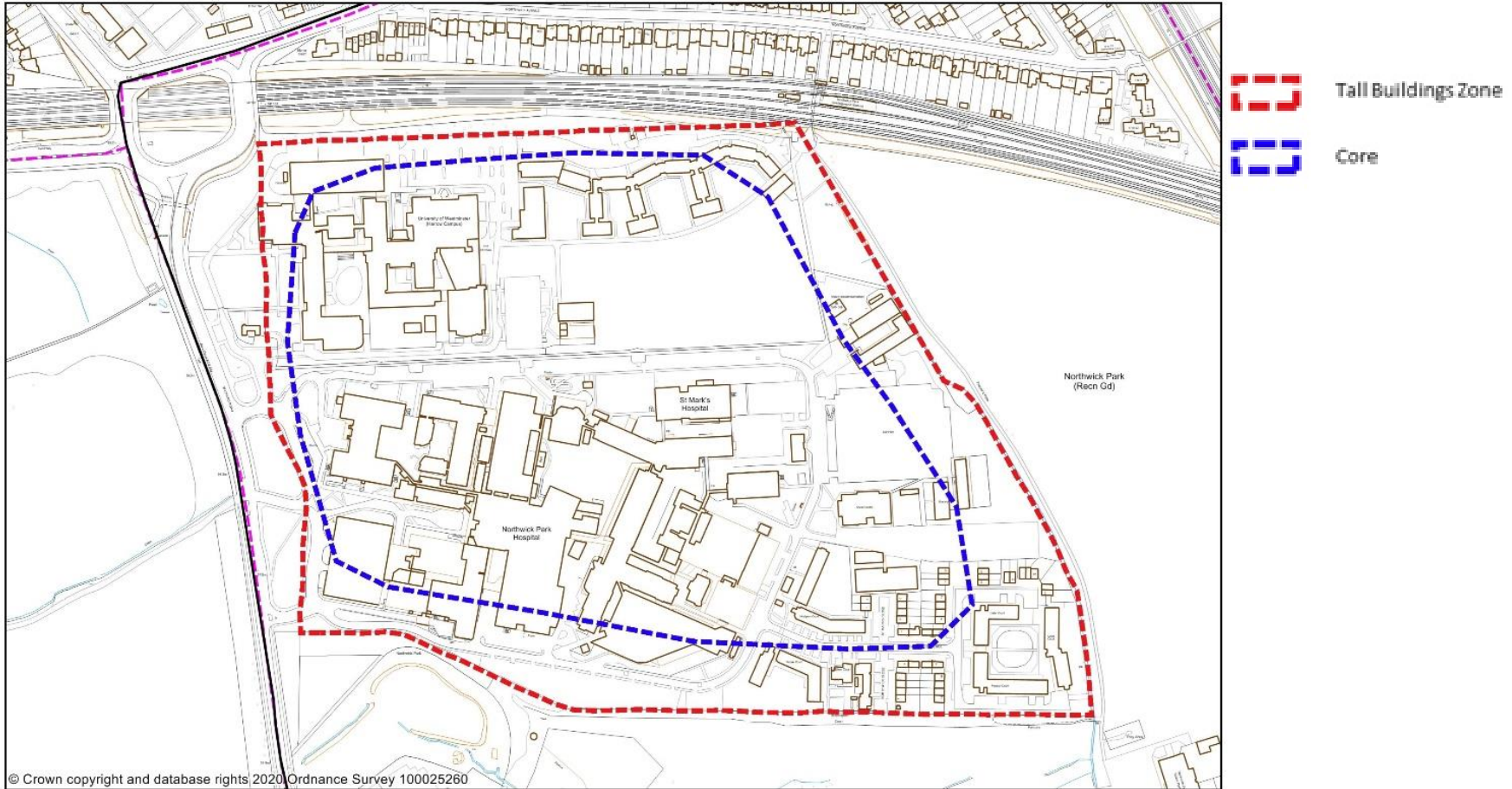
# Map Mod 20 Neasden Tall Building Zone remove the Core designation.

After



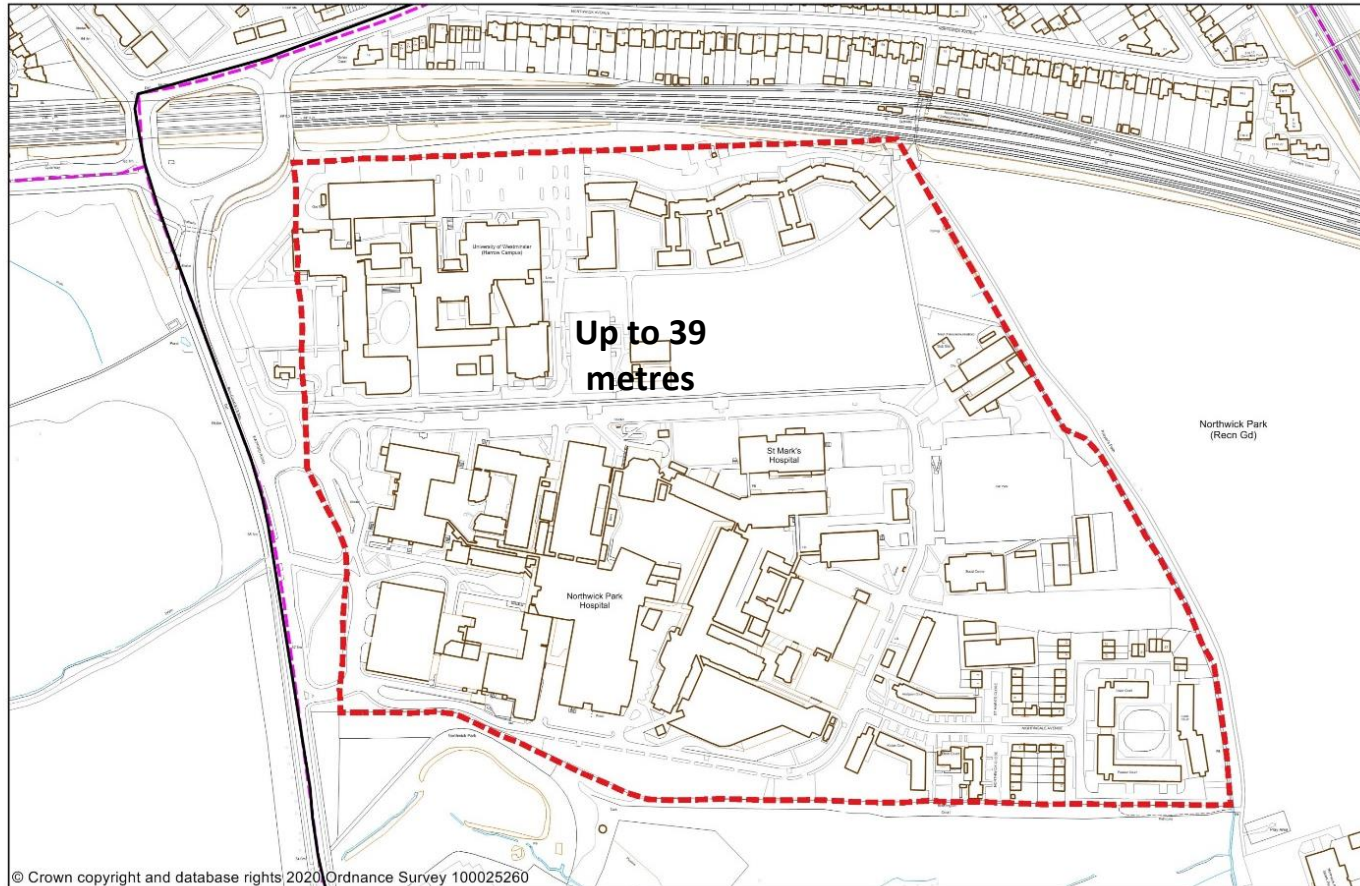
# Map Mod 21 Northwick Park Tall Building Zone remove the Core designation.

Before



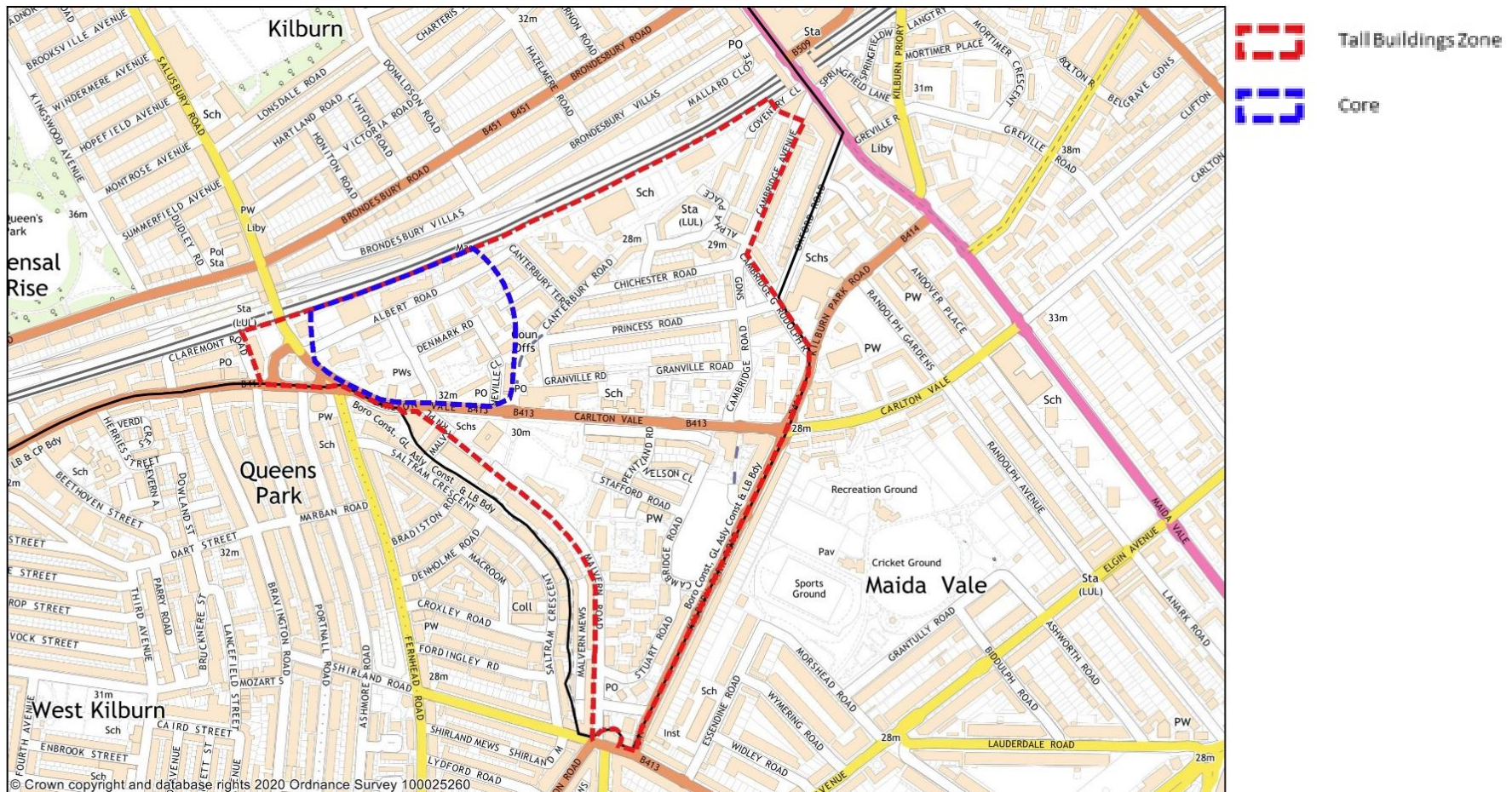
# Map Mod 21 Northwick Park Tall Building Zone remove the Core designation.

After



# Map Mod 22 South Kilburn Tall Building Zone remove the Core designation.

Before



# Map Mod 22 South Kilburn Tall Building Zone remove the Core designation.

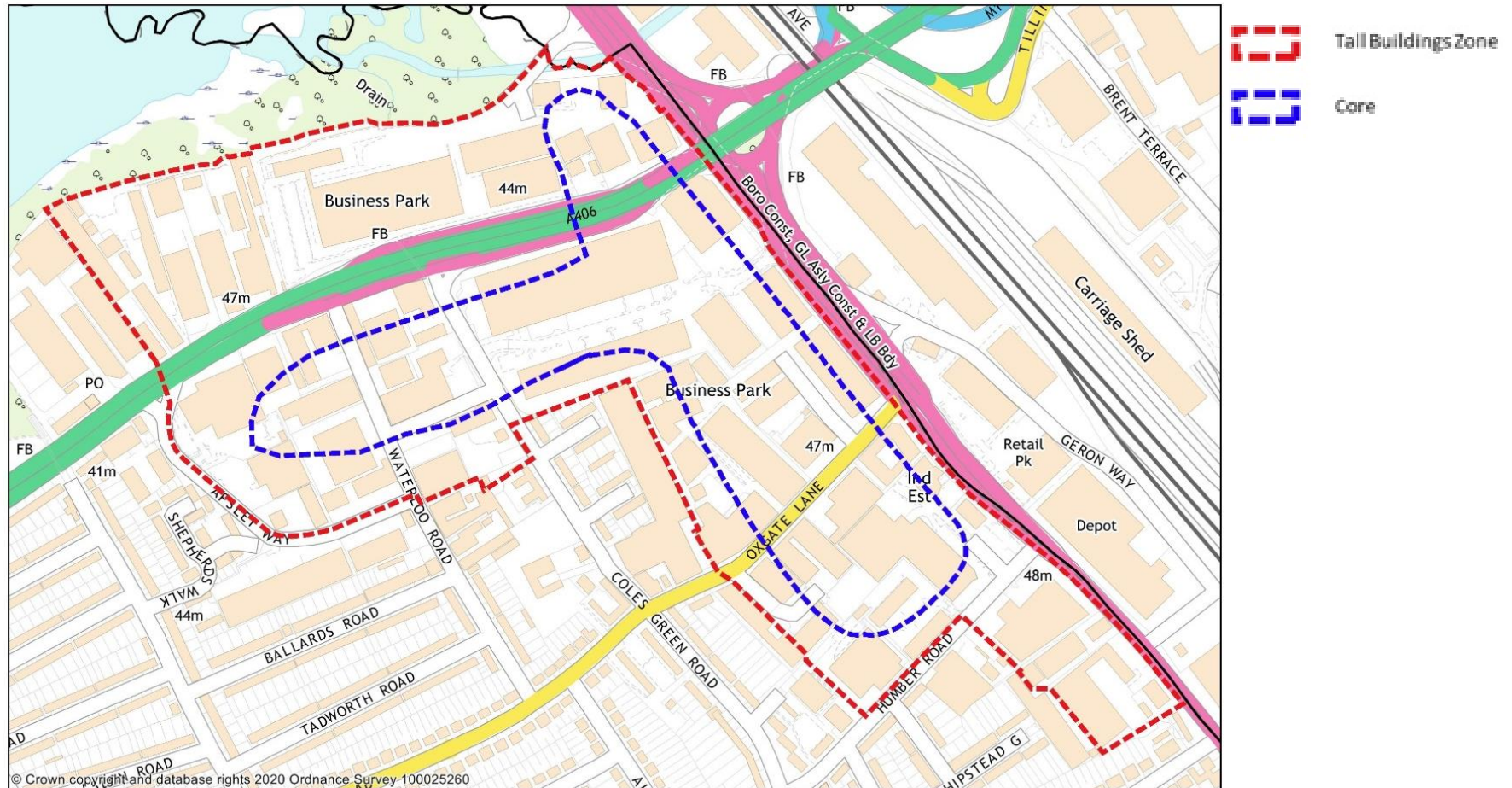
After





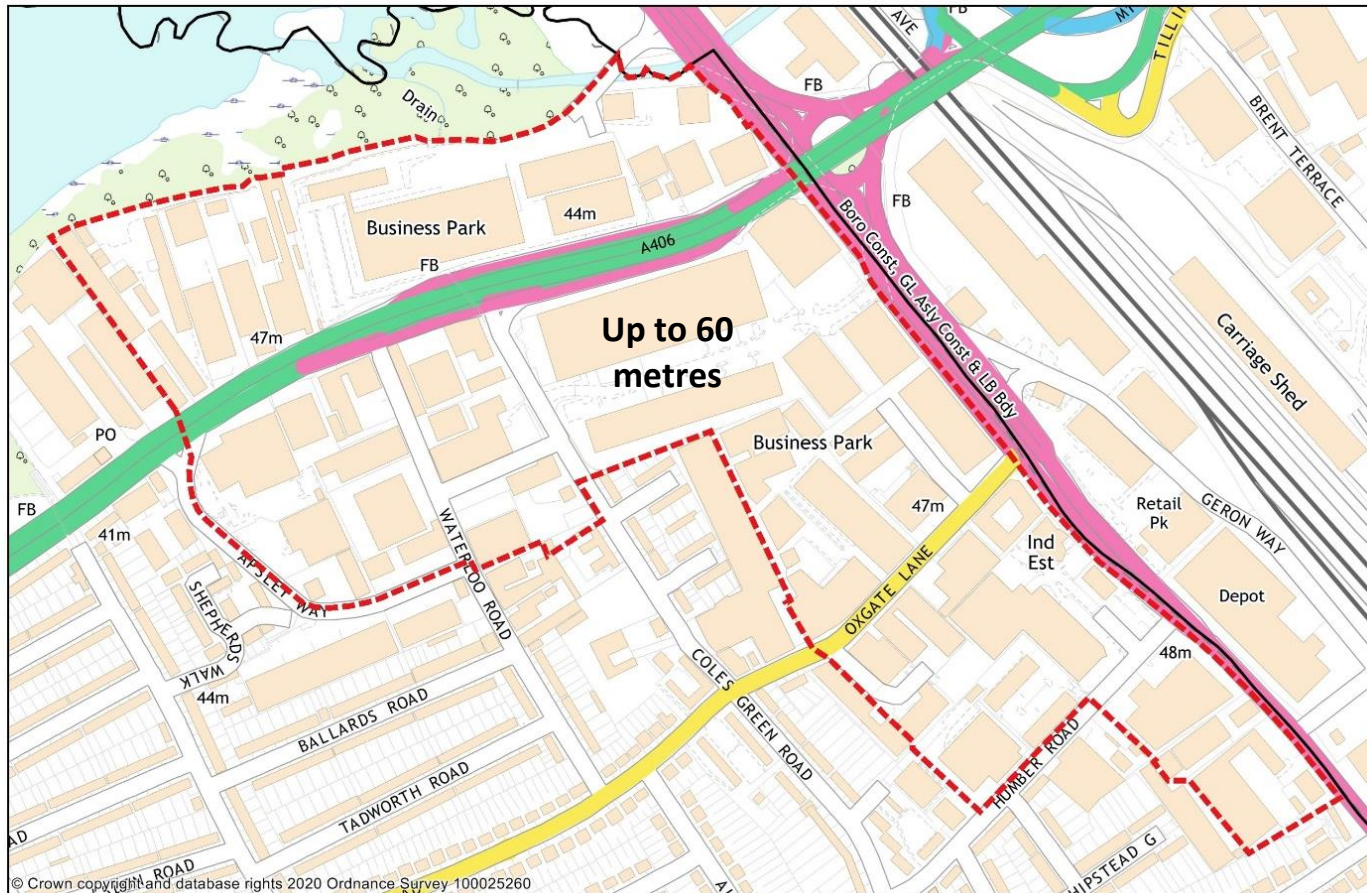
# Map Mod 23 Staples Corner Tall Building Zone remove the Core designation.

Before



# Map Mod 23 Staples Corner Tall Building Zone remove the Core designation.

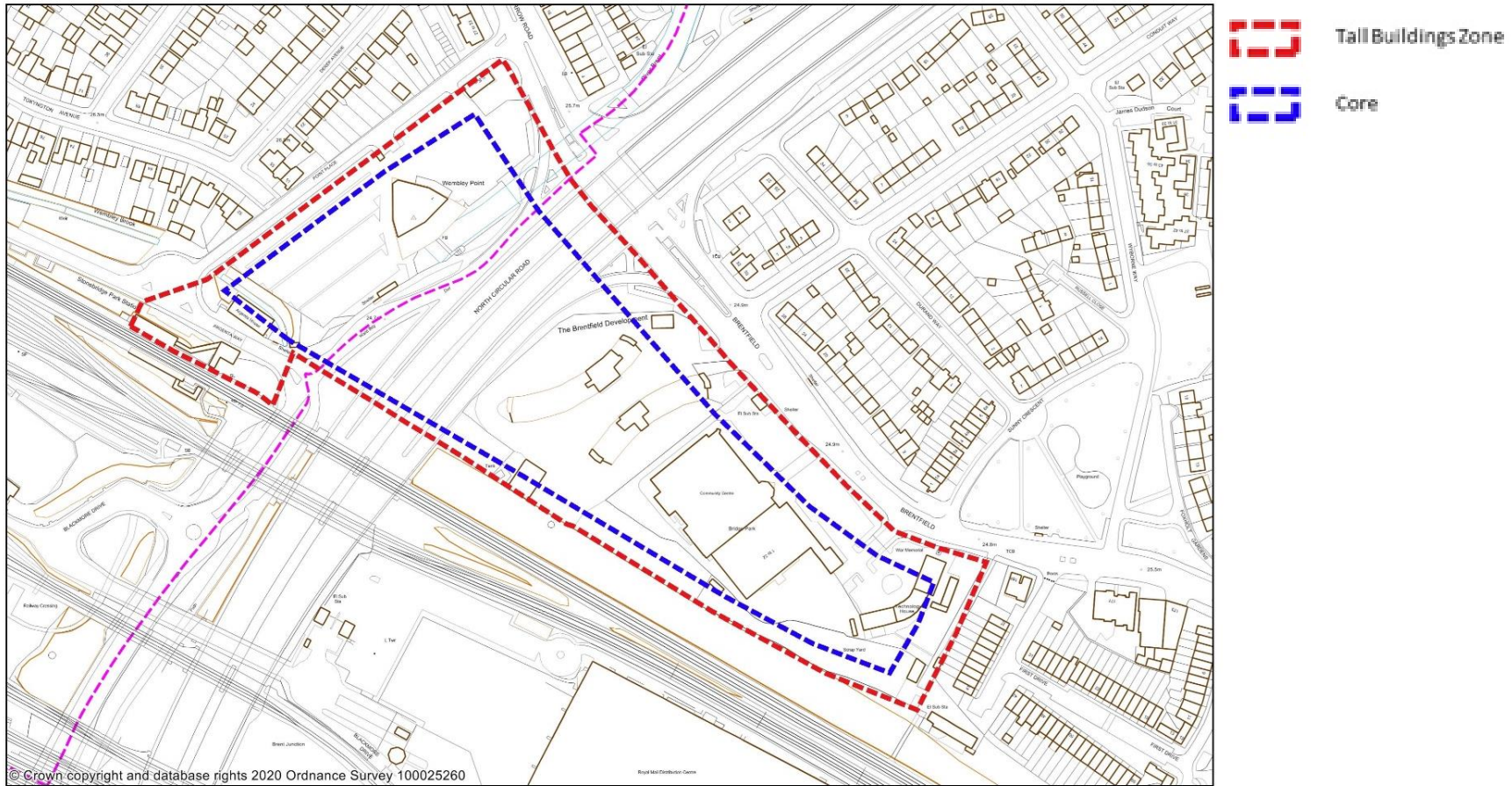
After



 Tall Buildings Zone

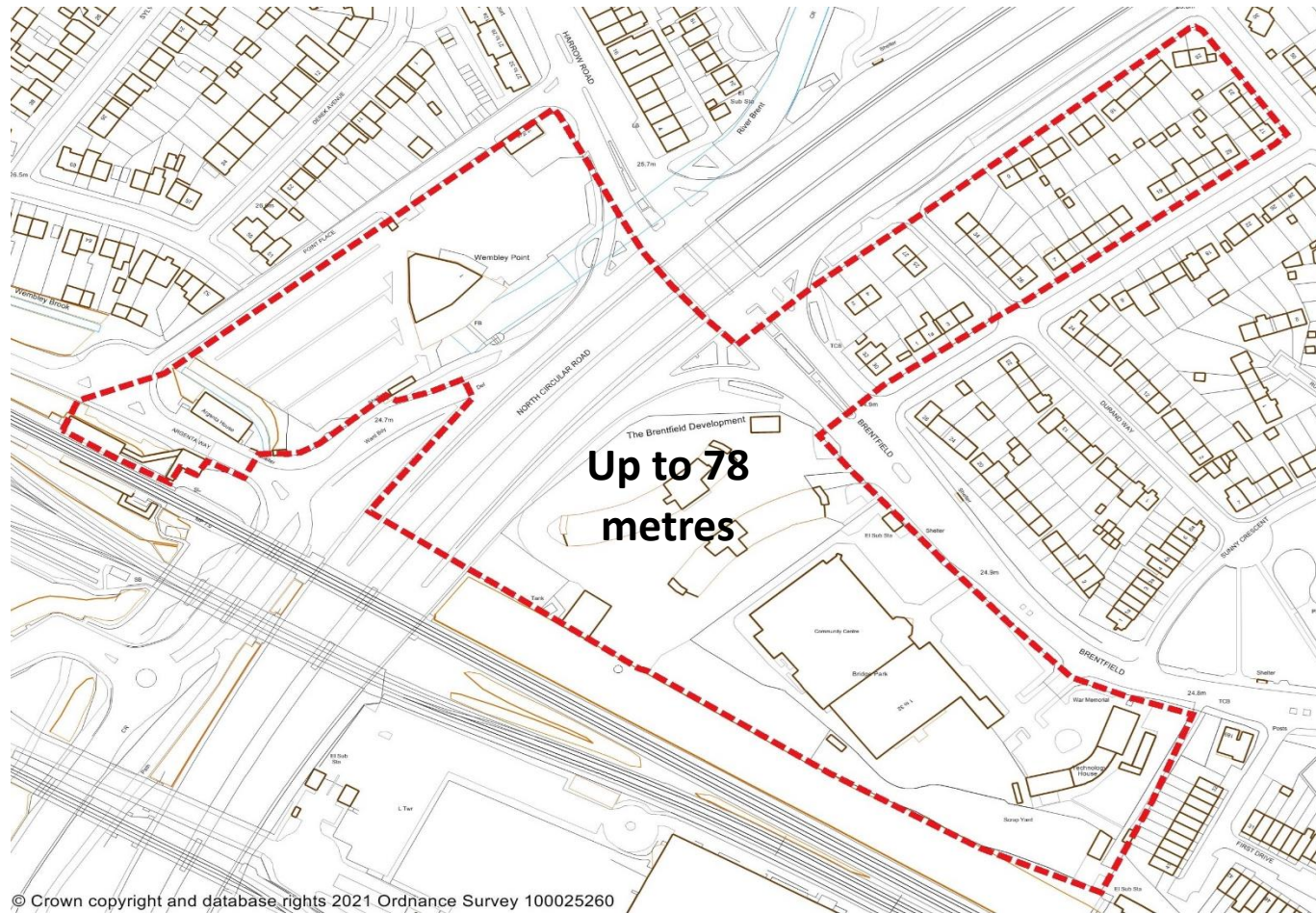
# Map Mod 24 Stonebridge Park Tall Building Zone remove the Core designation, extend the Zone and take account of OPDC boundary

Before



**Map Mod 24 Stonebridge Park Tall Building Zone remove the Core designation, extend the Zone and take account of OPDC boundary.**

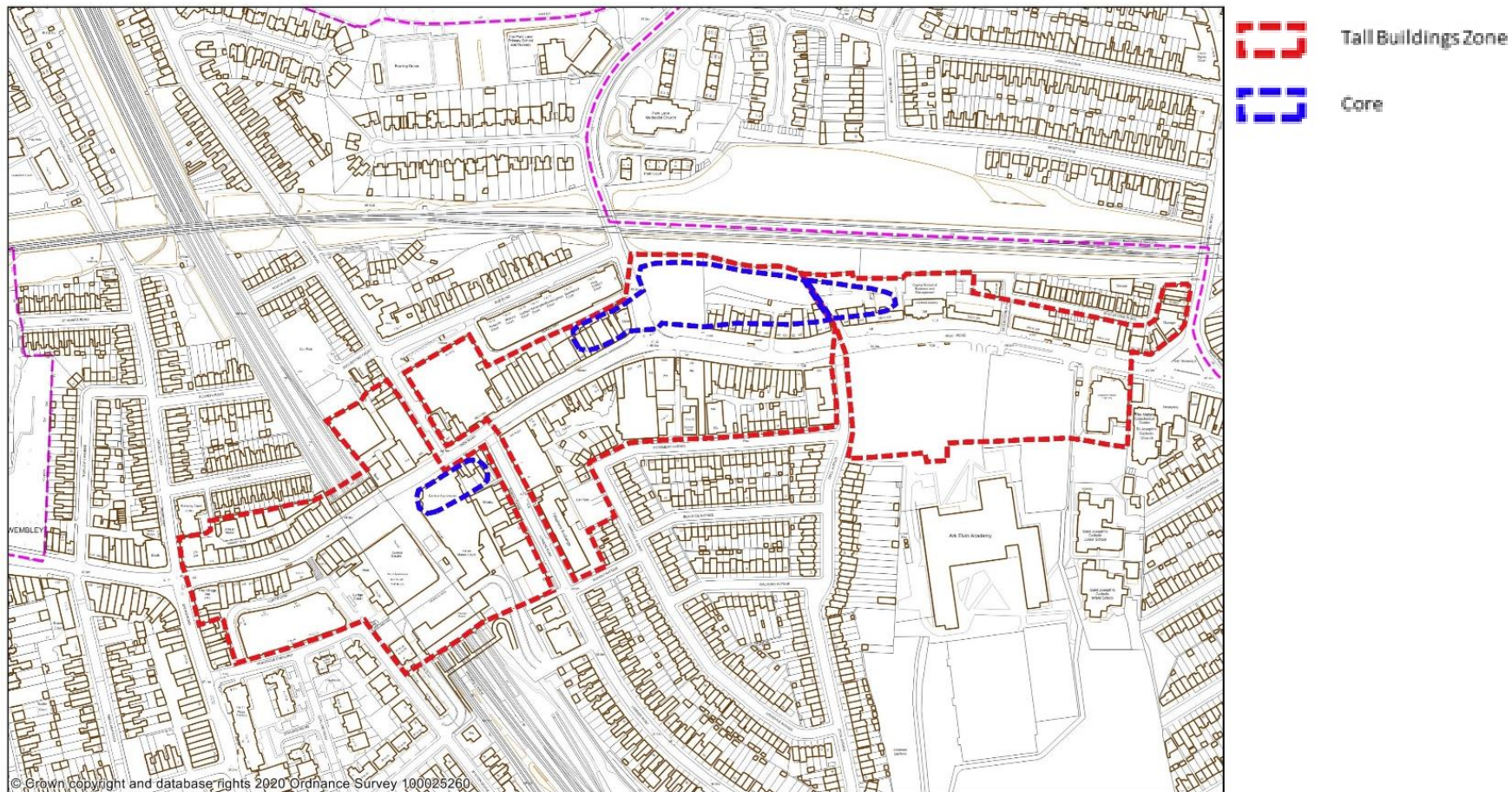
**After**



Tall Buildings Zone

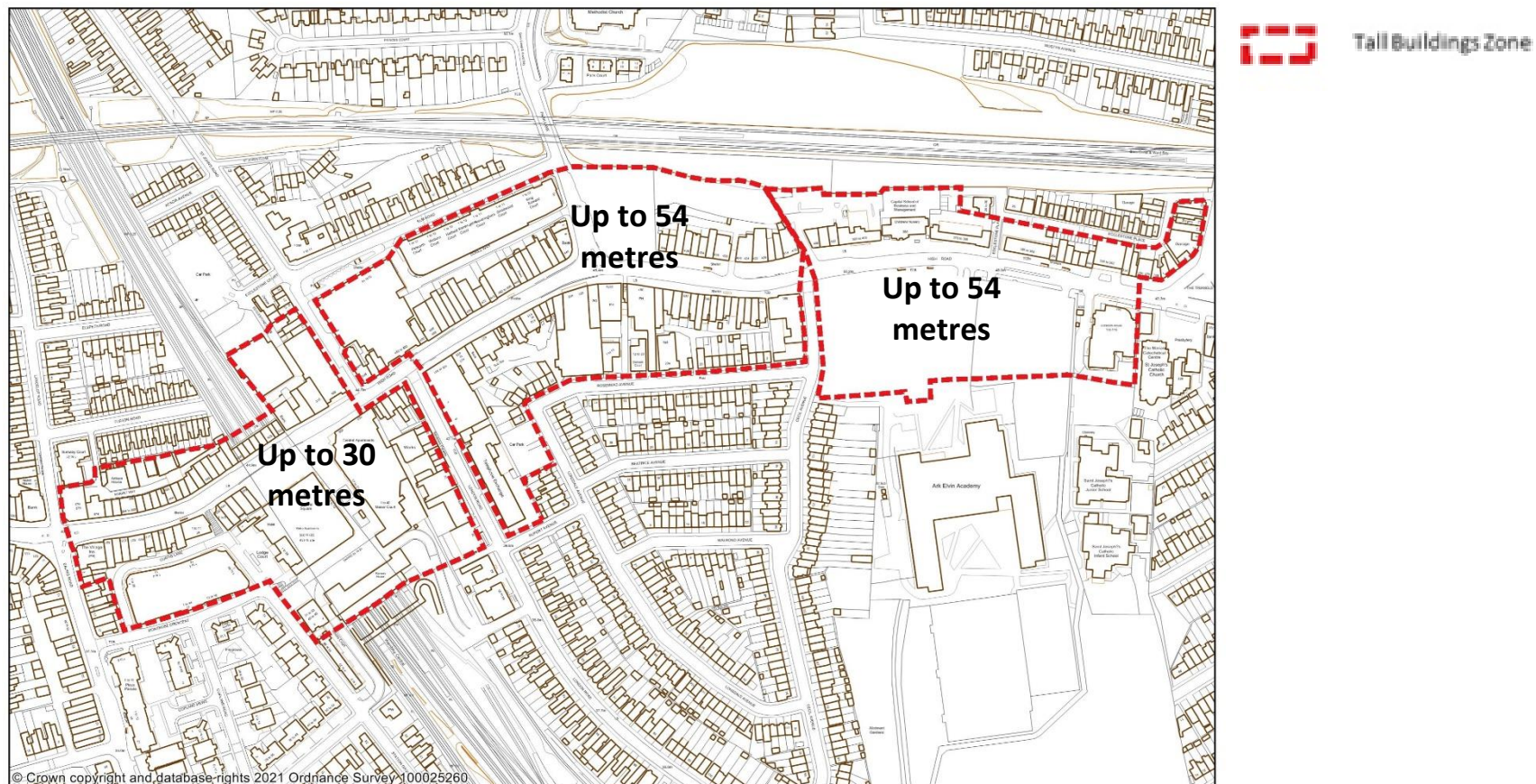
# Map Mod 25 Wembley Tall Building Zone remove the Core designation and extend the Zone.

Before



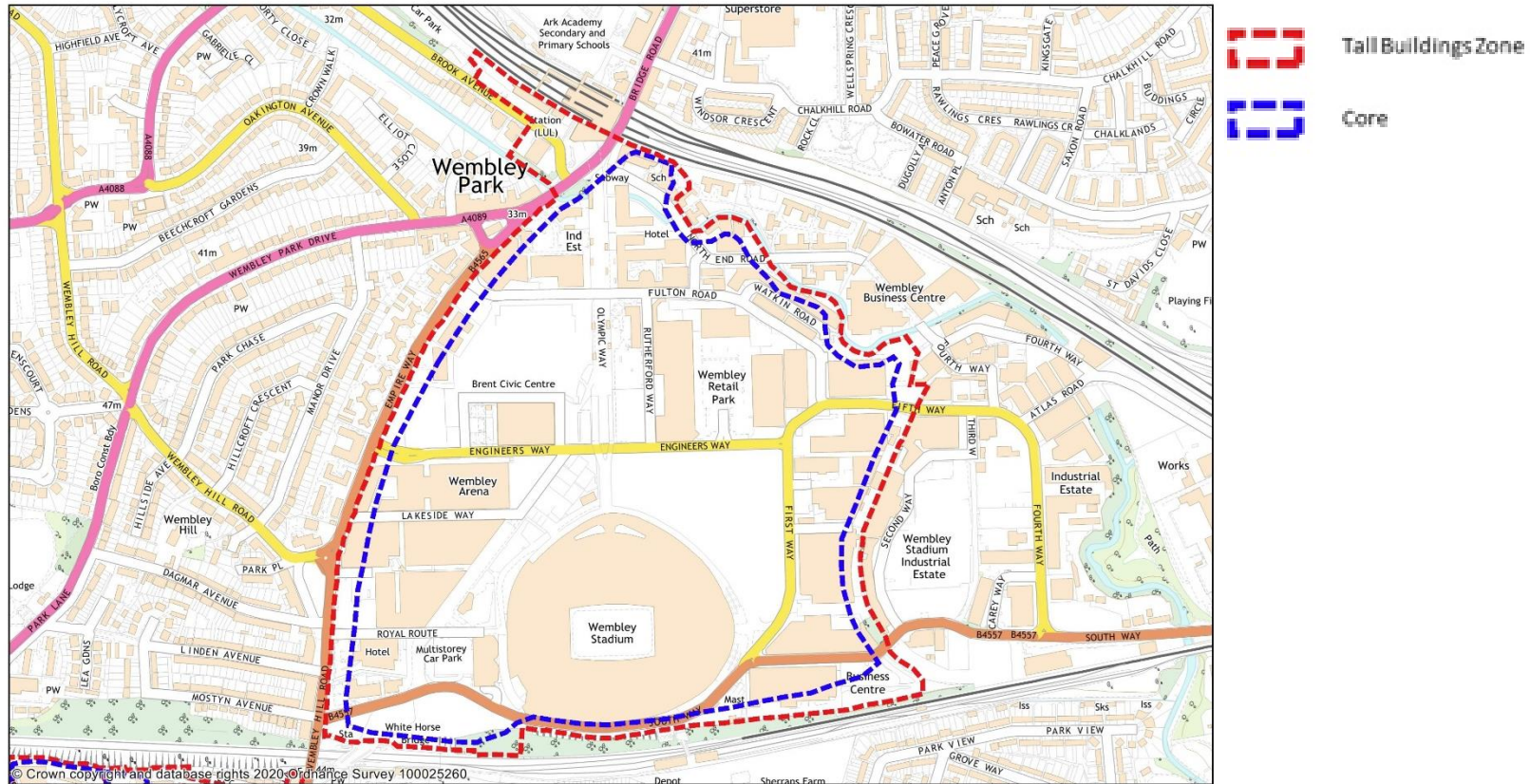
# Mod 25 Wembley Tall Building Zone remove the Core designation and extend the Zone.

After



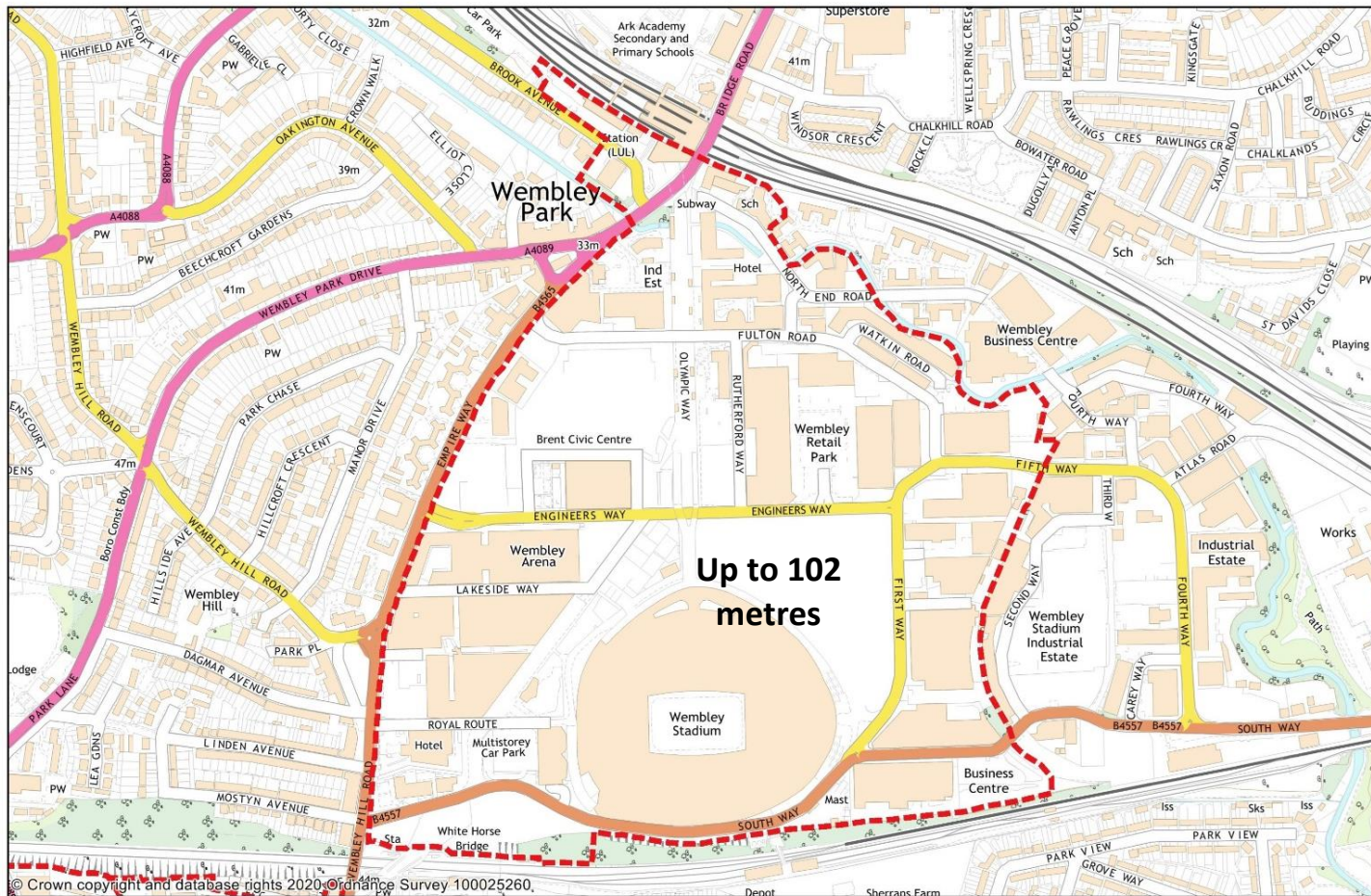
# Mod 26 Wembley Park Tall Building Zone remove the Core designation.

Before



# Mod 26 Wembley Park Tall Building Zone remove the Core designation.

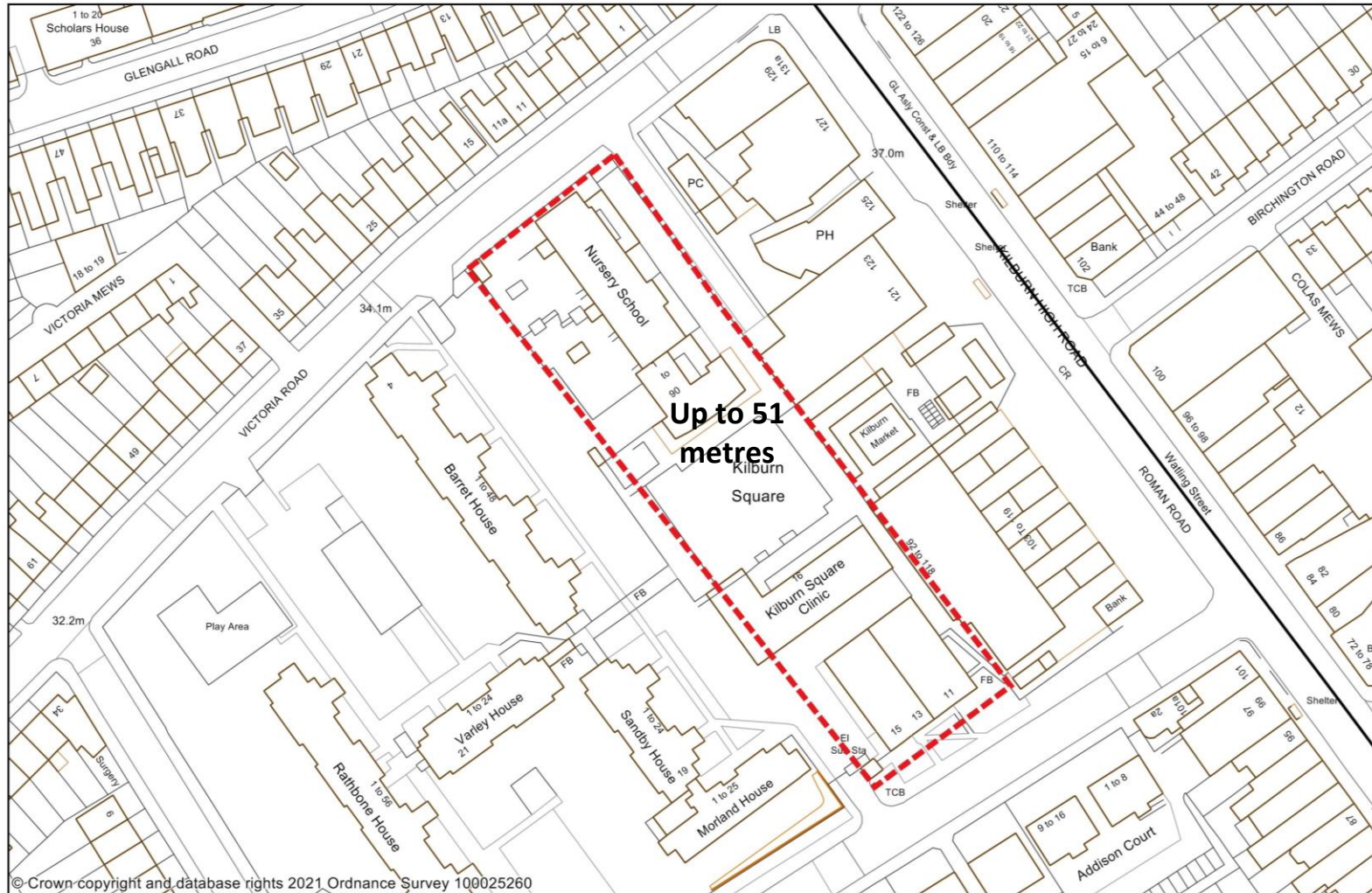
After



Tail Buildings Zone



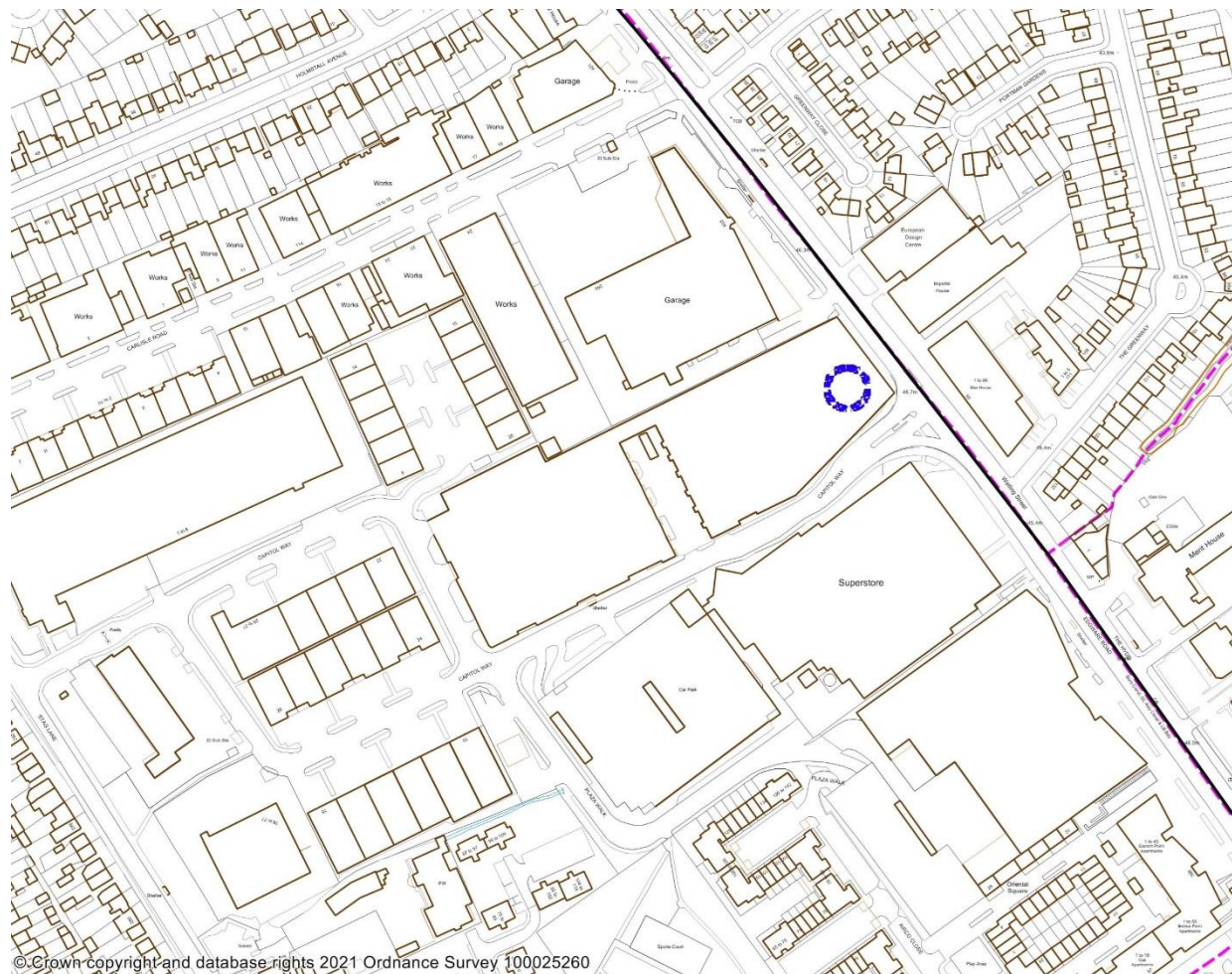
# Mod 27 Add new Kilburn Square Tall Building Zone



# Map mod 28 Remove existing Tall Building Zone Pinnacles – Wembley

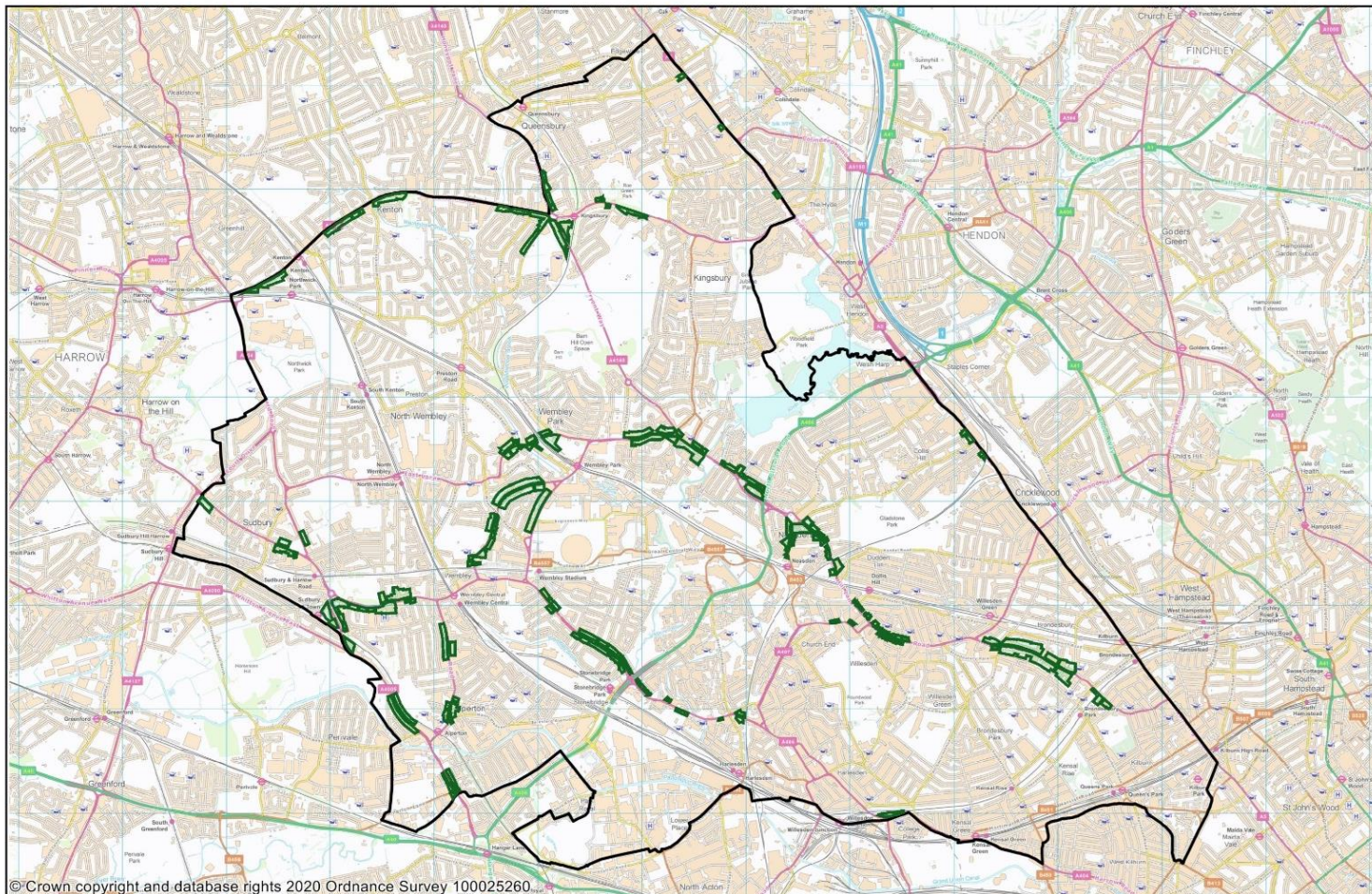


## Map mod 29 Remove existing Tall Building Zone Pinnacle – Burnt Oak



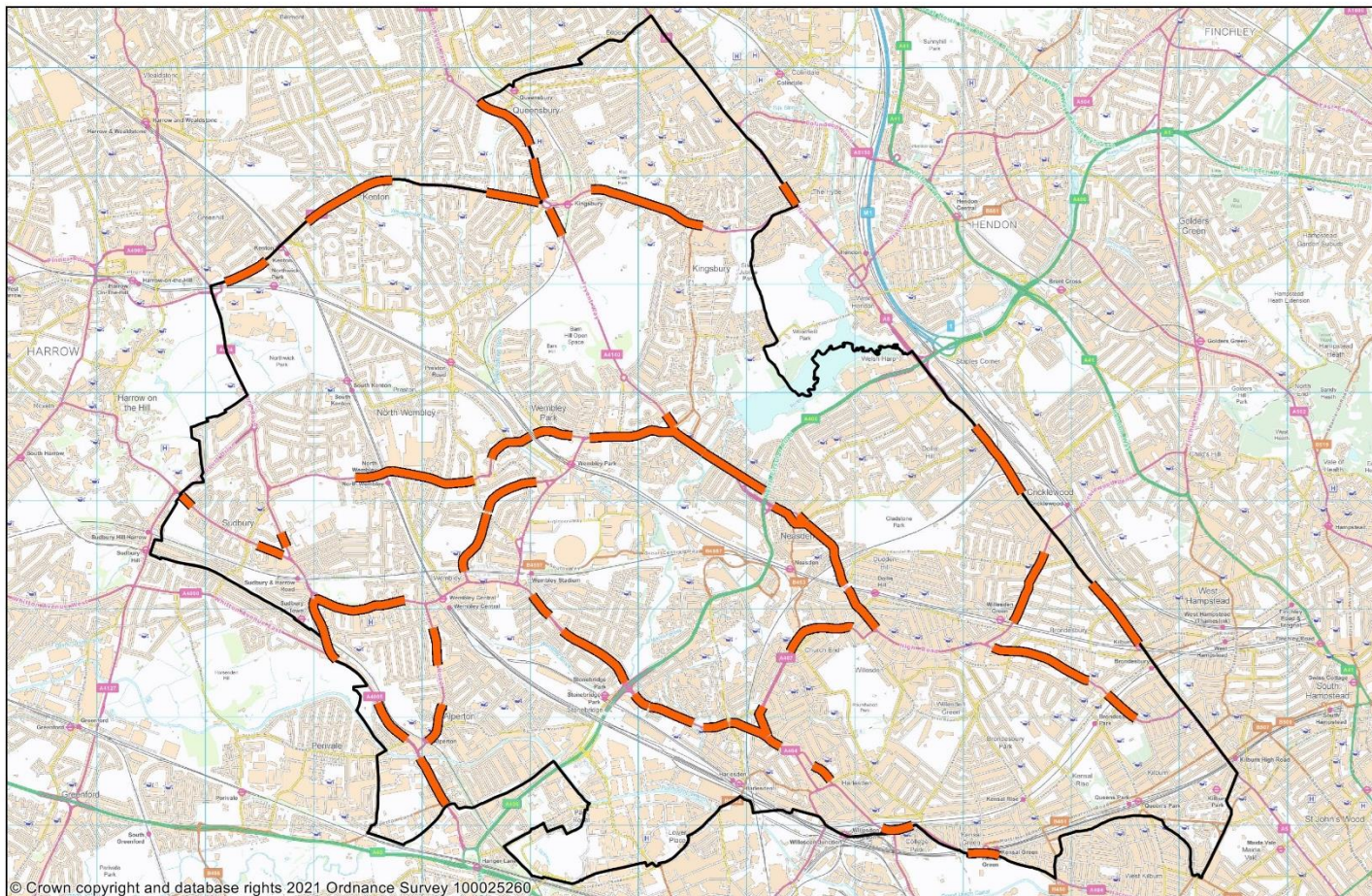
# Map mod 30 Remove existing intensification corridors and replace with new intensification corridors designation

Before



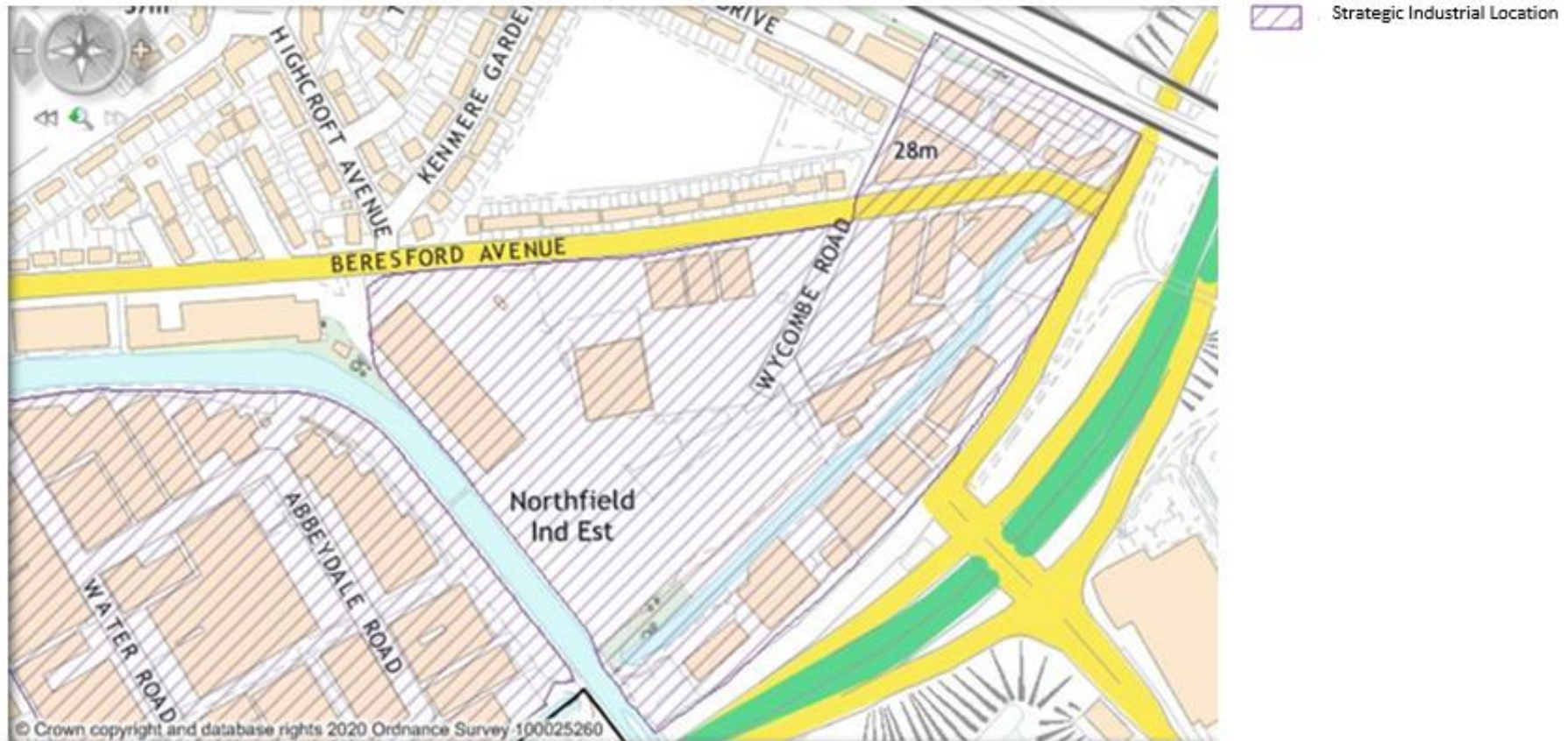
# Map mod 30 Remove existing intensification corridors and replace with new intensification corridors

After



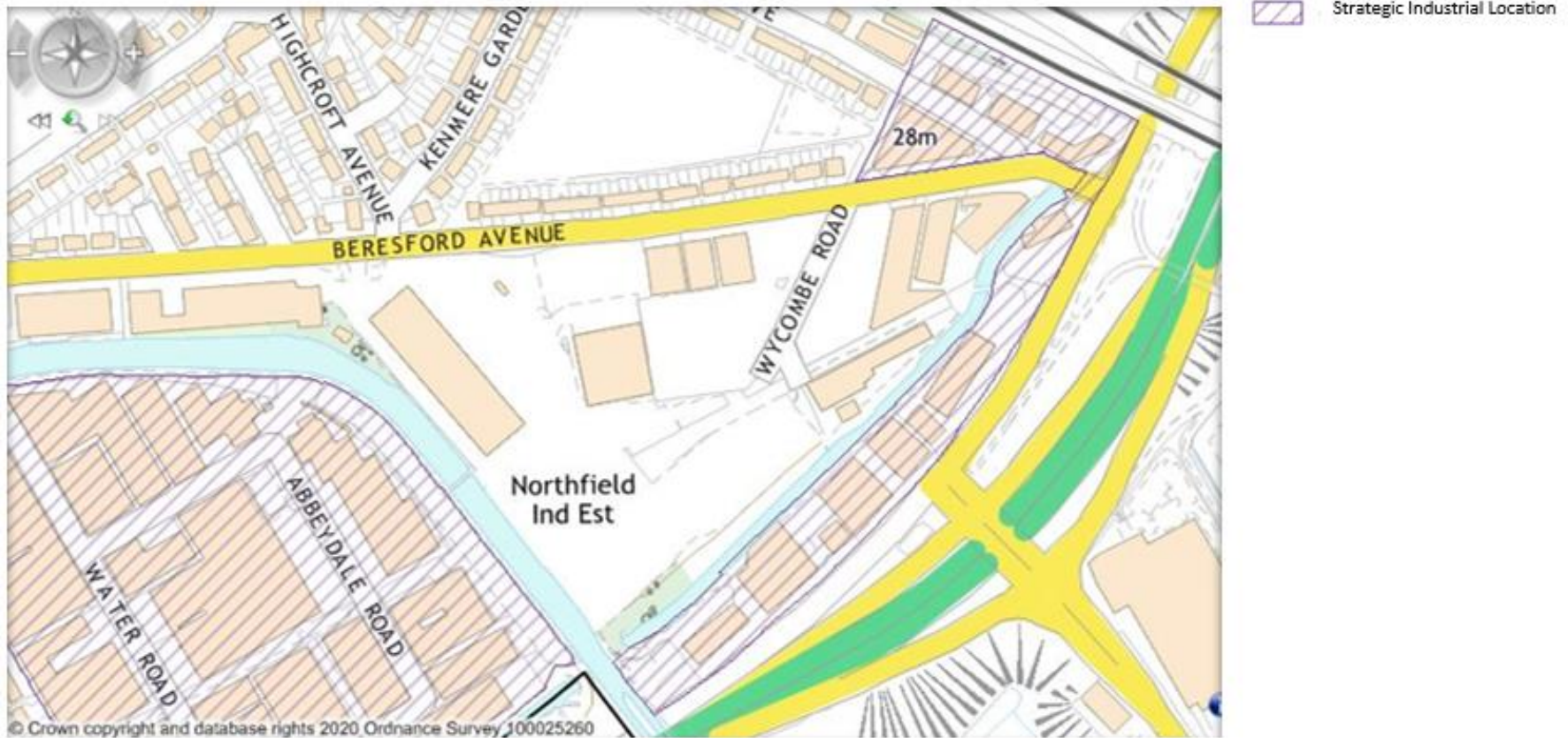
## Map mod 31 Amend boundary of Northfields East SIL

Before



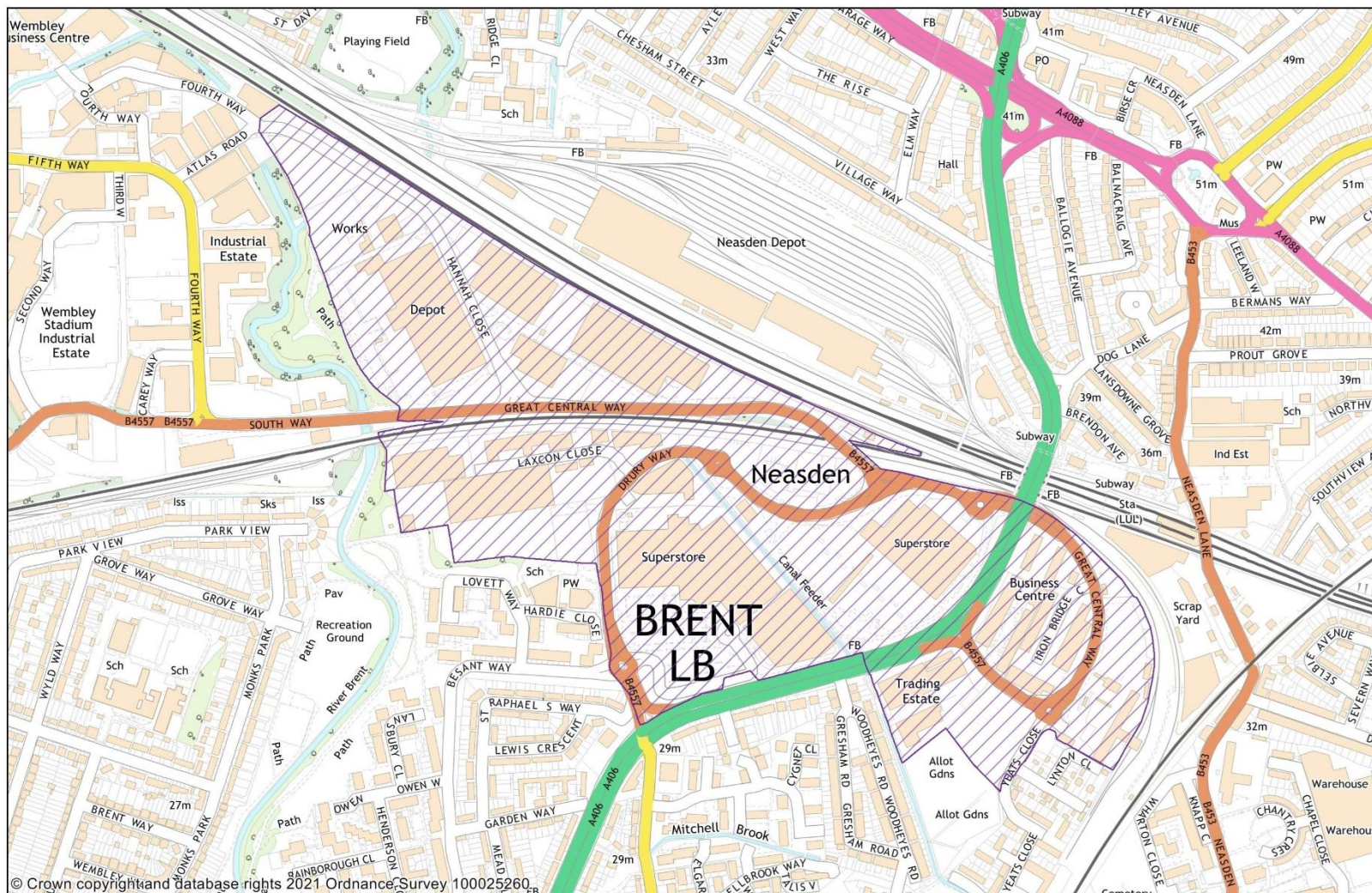
## Map mod 31 Amend boundary of Northfields East SIL

After



# Map mod 32 Amend Wembley Strategic Industrial Location boundary

Before





# Map mod 32 Amend Wembley Strategic Industrial Location boundary

After

