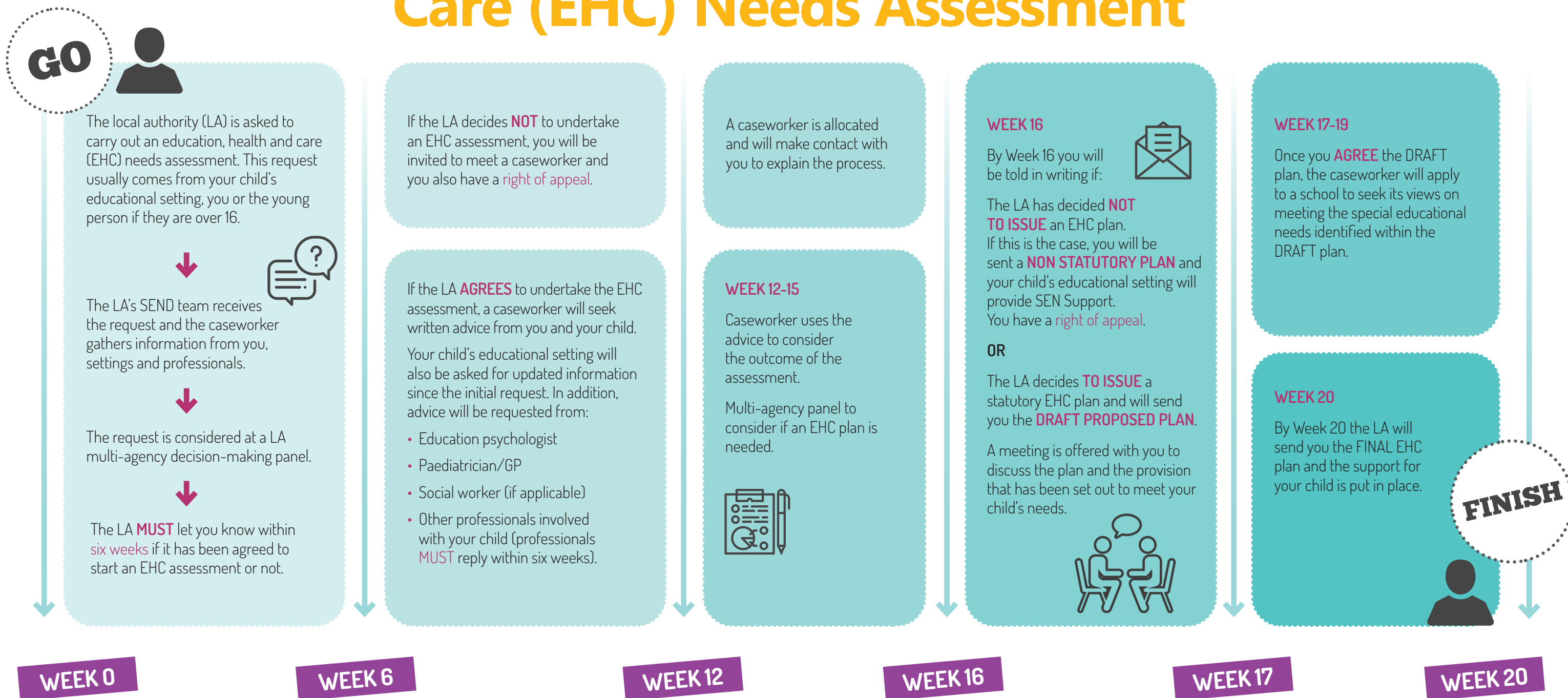


Timeline for an Education, Health and Care (EHC) Needs Assessment



WEEK 0-6 MAKE A DECISION

WEEK 7-12 SEEK FURTHER ADVICE

WEEK 13-16 DRAFT PLAN PRODUCED

WEEK 17-20 CONSULT AND FINALISE



NOTE: If you make a request, the LA will ask you and professionals to provide preliminary advice within two weeks.



NOTE: You have 15 calendar days to consider the proposed EHC Plan. Let the caseworker know if you have any feedback about it and any changes you want them to consider.



NOTE: Schools/settings have 15 calendar days to respond to consultations for placements.



NOTE: If at any time you need independent advice and support you can contact BRENT SEND Information, Advice and Support Service (SENDIASS) on 020 8937 3434.